



Wintertime Toys & Banks #6 February 17th, 2018 2/17/2018

Join us for our first sale of 2018 on Saturday, February 17th at 10am est for our online Wintertime Toy & Bank Auction that consists of over 690 lots! Including Mechanical and Still Banks, Cast Iron and Tin Toys, Fire Toys, Boats, Comic Toys, Submarines, Trains, Train Stations and Accessories, Safes, Doorstops, Celluloid Toys, Windup Toys, Automotive and much more! Ray and Bre will be answering questions and featuring items in this auction on FACEBOOK LIVE Thursday, February 15th at 7pm est. Facebook/cybertoyauctions Any questions please contact bremarrieday@gmail.com or call 412-841-0623 or visit cybertoyauctions.com

Register to Bid on Liveauctioneers.com - Search for Cyber Toy Auctions!

LOT #

1 Race Car / Stake Trucks

Arcade Mfg. / A. C. Williams. Made of Cast Iron. American - Circa 1920's / 30's. 4.25" - 5 1/2" L. Fine - Very Fine Condition. Estimate- 80.00 - 120.00



2 Tractors (One with Trailer)

Arcade Mfg. Made of Cast Iron. American - Circa 1920's. 3 1/2" - 10" L. Fine Condition. Estimate- 80.00 - 120.00



3 Yellow Cab

Arcade Mfg. Made of Cast Iron. American - Circa 1935. 8.25" L. Fine Condition. Estimate- 225.00 - 275.00



4 Paddlewheel Boat

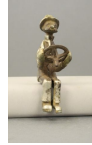
Wilkins Hardware. Made of Cast Iron. American - Circa 1895. 7 1/2" L. Excellent Condition. Estimate- 275.00 - 375.00



LOT #

5 Andy Gump Figure

Arcade Mfg. Made of Cast Iron. American - Circa 1925. Fits in the Andy Gump "348" Car. This is an original figure. Fine Condition. Estimate- 100.00 - 150.00



6 Dump Truck

A. C. Williams. Made of Cast Iron. American - Circa 1925. 8" Long. Repainted Condition. Estimate- 75.00 - 100.00



7 Toonerville Trolley

Dent Hardware. Made of Cast Iron. American - Circa 1925. 4" x 6 1/2". This is an original, nickel plated example of the toy. Excellent Condition. Estimate- 375.00 - 500.00



8 Two "Do-X" Airplanes

Hubley Mfg. Co. Made of Cast Iron. American - Circa 1930. 3 1/2" - 4 3/4" L. Near Mint Condition. Estimate- 300.00 - 400.00



Wintertime Toys & Banks #6 February 17th, 2018 2/17/2018

Register to Bid on Liveauctioneers.com - Search for Cyber Toy Auctions!

LOT #

- 9 New York World's Fair Tram**
Arcade Mfg. Made of Cast Iron. American
- Circa 1939. 10 1/2" L. Excellent
Condition. Estimate- 225.00 - 300.00



- 10 Double Decker Bus**
Kenton Hardware. Made of Cast Iron.
American - Circa 1925. 6" L. Fine
Condition. Estimate- 300.00 - 375.00



- 11 Bell Telephone Truck - Largest Size**
Hubley Mfg. Co. Made of Cast Iron.
American - Circa 1932. 13.25" L.
Excellent Condition. Estimate- 350.00 -
450.00



- 12 Hook & Ladder**
A. C. Williams. Made of Cast Iron.
American - Circa 1920. 7" L. Very Fine
Condition. Estimate- 80.00 - 120.00



- 13 Hook & Ladder**
Hubley Mfg. Co. Made of Cast Iron (Wood
Ladders). American - Circa 1920. 11" L.
Excellent Condition. Estimate- 200.00 -
300.00



- 14 Friction Fire Hose Reel**
Dayton Friction Co. Made of Sheet Tin /
Cast Iron. American - Circa 1910. 10.5" L.
Very Good Condition. Estimate- 250.00 -
350.00



LOT #

- 15 Swans Neck Irons**
Stevens & Brown. Made of Cast Iron.
American - Circa 1880's. 2.25" - 2.75" L.
Very Good Condition. Estimate- 80.00 -
120.00



- 16 Grasshopper**
Hubley Mfg. Co. Made of Cast Iron.
American - Circa 1930. 4.25" L. Good
Condition. Estimate- 90.00 - 120.00



- 17 Serpent Cap Gun**
J. & E. Stevens. Made of Cast Iron.
American - Circa 1895. 4.5" L. Very Good
Condition (Works Slowly). Estimate-
175.00 - 225.00



- 18 Three Banks**
American - Circa 1930. Cast Iron / Steel.
4.25" to 5.25" H. Good to Very Fine
Condition. Estimate- 70.00 - 90.00



- 19 Goat Cart**
Wilkins Hardware. Made of Cast Iron.
American - Circa 1890. 5" L. This
miniature toy is really scarce. Excellent
Condition. Estimate- 350.00 - 450.00



- 20 Chest of Drawers**
Stevens & Brown. Made of Cast Iron.
American - Circa 1875. 6.25" H. Very
Good Condition. Estimate- 100.00 - 150.00



Wintertime Toys & Banks #6 February 17th, 2018 2/17/2018

Register to Bid on Liveauctioneers.com - Search for Cyber Toy Auctions!

LOT #**21 Secretary**

Stevens & Brown. Made of Cast Iron.
American - Circa 1875. 6" H. This is one of the rare Stevens & brown furniture pieces. Very Good Condition. Estimate- 150.00 - 200.00

**22 Overland Circus Polar Bear Cage Wagon**

Kenton Hardware. Made of Cast Iron.
American - Circa 1939. 14" L. Very Fine Condition. Estimate- 275.00 - 375.00

**23 Log Wagon**

Kenton Hardware. Made of Cast Iron.
American - Circa 1925. 15" L. Very Fine Condition. Estimate- 300.00 - 400.00

**24 Overland Circus Polar Bear Cage Wagon**

Kenton Hardware. Made of Cast Iron.
American - Circa 1948. 14" L. Mint in the Box. Estimate- 375.00 - 500.00

**25 Hansom Cab**

Kenton Hardware. Made of Cast Iron.
American - Circa 1910. 11.5" L. Very Fine Condition (Driver Partly Repainted). Estimate- 375.00 - 500.00

**26 Doctor's Cart**

Wilkins hardware. Made of Cast Iron.
American - Circa 1890. 12.5" L. This is a very scarce version with an elongated running horse. Fine Condition. Estimate- 1,000.00 - 1,500.00

**LOT #****27 Plantation Dray**

Dent Hardware. Made of Cast Iron.
American - Circa 1910. 15.5" L. Pristine Condition. Estimate- 700.00 - 900.00

**28 Hose Reel**

Dent Hardware. Made of Cast Iron.
American - Circa 1910. 17" L. Excellent Plus (Comes with an original Wilkins Driver). Estimate- 900.00 - 1,200.00

**29 Oversize Hose Reel**

Dent Hardware. Made of Cast Iron.
American - Circa 1910. 23.5" L. This is the granddaddy of Hose Reels. Very Fine Condition. Estimate- 1,800.00 - 2,400.00

**30 Swan Chariot**

J. & E. Stevens. Made of Cast Iron.
American - Circa 1890. 9.5" L. This is a rare and very desirable toy. It has articulated wings that go up and down as the toy is moved. Very Fine Condition (Wings Restored). Estimate- 1,200.00 - 1,800.00

**31 Hook & Ladder**

Wilkins Hardware. Made of Cast Iron.
American - Circa 1895. 28.5" L. This is a scarce early Hook & Ladder. One needs two wooden ladders to complete the toy. Very Fine Condition. Estimate- 800.00 - 1,200.00



Wintertime Toys & Banks #6 February 17th, 2018 2/17/2018

Register to Bid on Liveauctioneers.com - Search for Cyber Toy Auctions!

LOT #**32 Three Horse Hook & Ladder**

Dent Hardware. Made of Cast Iron.
American - Circa 1910. 31" L. This is an impressive toy. Fit for anyone's mantle.
Excellent Condition (Needs a Clean).
Estimate- 1,800.00 - 2,400.00

**LOT #****37 Horseless Carriage**

James & Bixler. Made of Cast Iron.
American - Circa 1910. 6.25" L. This is a superior condition example of this scarce toy. Pristine Condition. Estimate- 400.00 - 600.00

**33 Clockwork Firehouse**

Ives, Blakeslee Company. Made of Cast Iron / Wood. American - Circa 1880. 15.25" L x 11.75" T x 8.5" W. This toy is quite scarce and desirable. Missing the pumper that typically accompanies it. Works Well. Very Fine Condition.
Estimate- 2,500.00 - 3,500.00

**38 Surrey with Woman Driver**

Pratt & Letchworth. Made of Cast Iron and Tin. American - Circa 1890. 15.5" L. A classic Pratt & Letchworth toy. Very Fine Condition (The horse missing it's guide wheel). Estimate- 550.00 - 750.00

**34 Friction Touring Car**

Clark Hillclimber. Made of Tin and Cast Iron. American - Circa 1905. The toy works well. 12.5" L. Fine Condition.
Estimate- 300.00 - 400.00

**39 The Symmetrosapce / Rooster Whistle**

American - Circa 1880/90. Made of Tin. 6.25" L x 4" T. Very Fine Condition.
Estimate- 125.00 - 175.00

**35 Double Decker Bus**

Kenton Hardware. Made of Cast Iron. American - Circa 1932. 9.75" L. Excellent Condition. Estimate- 800.00 - 1,200.00

**40 Horse on Platform**

James Fallows Mfg. Made of Tin. American Circa 1880's. 4.5" L. A superior and bright example. Pristine Condition.
Estimate- 225.00 - 300.00

**36 Hook & Ladder**

A. C. Williams. Made of Cast Iron. American - Circa 1920. 10" L. Excellent Condition. Estimate- 175.00 - 225.00

**41 Horse on Burgundy Platform**

James Fallows Mfg. Made of Tin. American - Circa 1890's. 6" L. Excellent Condition. Estimate- 275.00 - 375.00

**42 Lion on Platform**

George Brown Company. Made of Tin. American - Circa 1880's. 4" L. Fair Condition (base with no paint). Estimate- 125.00 - 150.00



Wintertime Toys & Banks #6 February 17th, 2018 2/17/2018

Register to Bid on Liveauctioneers.com - Search for Cyber Toy Auctions!

LOT #**43 Horse on Scalloped Platform**

James Fallows Mfg. Made of Tin.
American - Circa 1890's. 6.5" L. Good
Condition. Estimate- 125.00 - 150.00

**44 Conestoga Wagon**

George Brown Company. Made of Tin.
American - Circa 1890's. 7" L. Very Good
Condition. Estimate- 275.00 - 375.00

**45 Dump Wagon**

George Brown Company. Made of Tin.
American - Circa 1890's. 7.75" L. Very
Good Condition. Estimate- 150.00 - 200.00

**46 Dump Wagon**

George Brown Company. Made of Tin.
American - Circa 1885. 11" L. This is a
really cute toy with great highlights.
Excellent Condition. Estimate- 400.00 -
600.00

**47 Doctor's Gig**

James Fallows Mfg. Co. Made of Tin.
American - Circa 1885. 10.5" L. This cute
toy has stencils of a running horse on each
of the carriage sides. Very Fine Condition.
Estimate- 700.00 - 1,000.00

**48 Conestoga Wagon**

George Brown Company. Made of Tin.
American - Circa 1895. 10.25" L. Very
Fine Condition (Missing one circular roof
support). Estimate- 275.00 - 375.00

**LOT #****49 Double Horse Bell Toy**

George Brown Company. Made of Tin /
Iron. American - Circa 1885. 9" L. A
classic tin bell toy. The horses simulate
galloping and strike the bell. Very Good
Overall (The base is repainted). Estimate-
550.00 - 750.00

**50 Buffalo Bill Platform Toy**

James Fallows Company. Made of Tin.
American - Circa 1885. 9" L. This example
with a single articulated Buffalo being fired
at by Buffalo Bill. Very Good Condition.
Estimate- 700.00 - 900.00

**51 Seesaw Bell Toy**

Gong Bell Mfg. Made of Tin. American -
Circa 1885. 7.5" L. This is a scarce and
very desirable bell toy comprising tin and
iron. Very Fine Condition (The woman's
hat and one side of her face are repainted).
Estimate- 1,000.00 - 1,500.00

**52 Chalkware Santa**

Made in Germany circa 1910. Made of
Chalk. 7.5" H. Good Condition (Missing
his wire tree). Estimate- 300.00 - 400.00

**53 "Skip" Floor Train**

James Fallows Mfg. Made of Tin.
American - Circa 1885. 21" L. Fine
Condition. Estimate- 600.00 - 900.00



Wintertime Toys & Banks #6 February 17th, 2018 2/17/2018

Register to Bid on Liveauctioneers.com - Search for Cyber Toy Auctions!

LOT #

54 "Union" Clockwork Train

Ives, Blakeslee Company. Made of Tin. American - Circa 1885. 12.5" L. This is an impressive and colorful clockwork train engine. Ives, Blakeslee was considered the preeminent manufacturer of American tin clockwork trains. Very Fine Condition (The boiler and cab roof have been partially repainted). It works well. Estimate- 1,200.00 - 1,800.00



LOT #

59 House with Woman Doorstop

Eastern Specialty Co. - Circa 1925. Made of Cast Iron. 8.25" wide x 6" High. Poor Condition. Estimate- 50.00 - 75.00



55 "Pure Milk" Wagon

James Fallows Mfg. Co. Made of Tin. American - Circa 1890. 13" L. Very Good Condition. Estimate- 350.00 - 500.00



60 Anne Hathaway House Doorstop

American - Circa 1925. Made of Cast Iron. 7.5" Wide x 6.75" High. Very Good Condition. Estimate- 225.00 - 300.00



56 Two Horse Clockwork Gig

Altoph Bergmann Company. Made of Tin and Iron. American - Circa 1880. 16.5" L. This is an impressive, large scaled, American tin clockwork toy. Fine Condition (Figure is repainted). Works well. Estimate- 2,200.00 - 2,800.00



61 Cape Cod Doorstop

Eastern Specialty Co. - Circa 1930. Made of Cast Iron. 8.75" Wide x 5.75" High. Excellent Condition. Estimate- 175.00 - 225.00



57 Railroad Transfer Wagon

James Fallows. Made of Tin. American - Circa 1880's. 22" L. This is a large scaled American tin toy that we have never seen before. It is quite colorful and bright. Fine Overall Look (It has been substantially restored). Estimate- 1,500.00 - 2,000.00



62 Spaniel Doorstop

American - Circa 1925. Made of Cast Iron. 6" Wide x 8" High. We have never seen this guy before. Fine Condition. Estimate- 250.00 - 350.00



58 Express Wagon with Paper Mache Figure

Altoph Bergmann Company. Made of Tin, Cloth and Fabric. 24.5" L. This is the deluxe version of an Express Wagon toy. Those made with full bodied figures are quite scarce. Fine Condition. Estimate- 2,000.00 - 3,000.00



63 Boston Terrier - Small

Hubley Mfg. Co. - Circa 1930. Made of Cast Iron. 10" Wide x 8.25" High. Fine Condition. Estimate- 100.00 - 150.00



64 Malamute

American - Circa 1925. Made of Cast Iron. 7.5" Wide x 7" High. A scarce doorstop. Very Fine Condition. Estimate- 225.00 - 300.00



Wintertime Toys & Banks #6 February 17th, 2018 2/17/2018

Register to Bid on Liveauctioneers.com - Search for Cyber Toy Auctions!

LOT #

65 Flower Basket

Albany Foundry - Circa 1935. Made of Cast Iron. 5.75" W x 6.5" High. Pristine Condition. Estimate- 80.00 - 120.00



66 Wild Turkey's Doorstop

American - Circa 1925. Made of Cast Iron. 5.5" Wide x 6.75" High. We have not seen this colorful doorstop before. Very Fine Condition. Estimate- 225.00 - 300.00



67 Tulip Pot Doorstop

National Foundry - Circa 1925. Made of Cast Iron. 8.25" Wide x 7.25" High. Fine Condition. Estimate- 175.00 - 250.00



68 Three Bottle Openers

Wilton Products - Circa 1930's. Made of Cast Iron. 3.25" - 4.5" High. Very Good Condition. Estimate- 100.00 - 150.00



69 Horse & Jockey Desk Accessory

Hubley Mfg. Co. - Circa 1935. Made of Cast Iron. 5" Wide x 5" High. Excellent Condition. Estimate- 75.00 - 100.00



70 Two Bottle Openers / One Bell

American - Circa 1920's/30's. Made of Cast Iron. 3.5" - 5" High. Fine to Excellent Condition. Estimate- 80.00 - 120.00



LOT #

71 Trick Pony Mechanical Bank

Shepard Hardware Co. - Circa 1880's. Made of Cast Iron. Very Fine Condition. Estimate- 900.00 - 1,200.00



72 Giant in Tower Mechanical Bank

John Harper Ltd - Circa 1890's. Made of Cast Iron. Fine Paint (Giant Replaced). Estimate- 1,400.00 - 1,800.00



73 Elephant Pull Tail Mechanical Bank

Hubley Mfg. Co. - Circa 1930's. Made of Cast Iron. Excellent Condition. Estimate- 350.00 - 500.00



74 Trick Dog - Solid Base Mechanical Bank

Hubley Mfg. Co. - Circa 1920's. Made of Cast Iron. Very Fine Condition (No Trap). Estimate- 275.00 - 375.00



75 Indian & Brown Bear Mechanical Bank

J. & E. Stevens - Circa 1900's. Made of Cast Iron. Very Fine Condition with Original Feathers. Estimate- 1,400.00 - 1,800.00



76 Hoopla Mechanical Bank

John Harper Ltd. - Circa 1900's. Made of Cast Iron. Good Paint. Repaired top plate, figure broken out and no trap. Estimate- 250.00 - 350.00



Wintertime Toys & Banks #6 February 17th, 2018 2/17/2018

Register to Bid on Liveauctioneers.com - Search for Cyber Toy Auctions!

LOT #

77 Large Crown Bank on Legs

American - Circa 1880. Made of Cast Iron. Fine Condition. Estimate- 500.00 - 700.00



78 Trolley with Passengers

A. C. Williams - Circa 1920. Made of Cast Iron. Fine Condition. Estimate- 175.00 - 250.00



79 Model A Sedan Bank

Arcade Mfg. Co. - Circa 1922. Made of Cast Iron. Very Fine Condition (Wheels Repainted). Estimate- 350.00 - 500.00



80 Rabbit in Cabbage

Kilgore Mfg. Made of Cast Iron. One side Very Fine Condition, One side Good Condition. Estimate- 400.00 - 600.00



81 Billy Goat Bank

J. & E. Stevens - Circa 1910. Made of Cast Iron. This is a really scarce bank, there are perhaps 30 - 40 known examples. Very Fine Condition. Estimate- 2,000.00 - 3,000.00



82 Magic Bank - Green and Red

J. & E. Stevens - Circa 1880's. Made of Cast Iron. Fine Overall Condition (Roof repaired and repainted) Estimate- 800.00 - 1,200.00



LOT #

83 Squirrel and Tree Stump

Mechanical Novelty Works - Circa 1880's. Made of Cast Iron. This is a completely japanned specimen. Excellent Condition (Replaced Base Plate is Tin). Estimate- 1,200.00 - 1,800.00



84 Spise Mule Jockey Over

J. & E. Stevens - Circa 1880's. Made of Cast Iron. Very Fine Condition. Estimate- 500.00 - 800.00



85 Boy Scout Camp

J. & E. Stevens - Circa 1910. Made of Cast Iron. Good Condition (Replaced Flag and the Scouts arms with minor burn marks where the flag was set in). Estimate- 1,200.00 - 1,500.00



86 Automat Chocolate Vending Bank

German - Circa 1920's. 6" Tall. Made of Tin. Very Fine Condition. Estimate- 225.00 - 275.00



87 Automatic Fortune Savings Bank

Made by Leon Soroko. London, England - Circa 1926. 5.25" Tall. This is a very scarce European tin bank. There are probably fewer than 25 known examples. Fine Condition. Estimate- 1,800.00 - 2,500.00



Wintertime Toys & Banks #6 February 17th, 2018 2/17/2018

Register to Bid on Liveauctioneers.com - Search for Cyber Toy Auctions!

LOT #

88 Jolly N. Aluminum

English - Circa 1920's. Made of Aluminum. Pristine Condition. Estimate- 250.00 - 350.00



LOT #

94 Independence Hall Tower

Enterprise Mfg. Co. - Circa 1876. Made of Cast Iron. Very Fine Condition. Estimate- 400.00 - 600.00



89 Dinah - Short Sleeves

John Harper Ltd. - Circa 1920's. Made of Cast Iron. Very Fine Condition. Estimate- 500.00 - 700.00



95 Home Bank

J. & E. Stevens Co. - Circa 1870's. Made of Cast Iron. Very Fine Condition. Estimate- 1,400.00 - 1,800.00



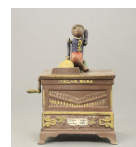
90 Jolly N. Straight Letters

Chamberlain & Hill - Circa 1920's. Made of Cast Iron. Excellent Condition. Estimate- 550.00 - 750.00



96 Organ Bank - Medium

Kyser & Rex - Circa 1880's. Made of Cast Iron. Very Fine Condition (Tray Arm needs to be reattached to monkey). Estimate- 350.00 - 500.00



91 Ringing Globe

Enterprise Mfg Co. - Circa 1876. Made of Cast Iron. Made for the Centennial Celebration. Very Fine Condition. Estimate- 350.00 - 500.00



97 Penny Pineapple

George Imswiler - Circa 1959. Made of Cast Iron. Pristine Condition. Estimate- 150.00 - 200.00



92 Elephant Howdah, Man Pops Out

Enterprise Mfg. Co. - Circa 1880's. Made of Cast Iron. Very Fine Condition. Estimate- 550.00 - 750.00



98 Friars Favorite Bank

Reynolds Toys - Dated 1997. Made of Aluminum. Pristine Condition. Estimate- 175.00 - 250.00



93 Bulldog, Blue Blanket

J. & E. Stevens Co. - Circa 1880's. Made of Cast Iron. Very Fine Condition. Estimate- 650.00 - 950.00



99 Elephant and Three Stars - Aluminum

American - Circa 1940's / 50's. Made of Aluminum. A later version. Excellent Condition. Estimate- 200.00 - 300.00



Wintertime Toys & Banks #6 February 17th, 2018 2/17/2018

Register to Bid on Liveauctioneers.com - Search for Cyber Toy Auctions!

LOT #

100 Elephant with Painted Stars

Probably Canadian - Circa 1895. Made of Cast Iron. Pristine Condition. Estimate- 400.00 - 600.00



LOT #

106 The Acrobat

Made in Japan circa 1950's. Made of Celluloid and Wire. Works well. Very Fine Condition. Estimate- 50.00 - 75.00



101 "Drive In" Bank

Made for Franklin Mint. Chinese - Dated 1992. Made of Aluminum and Wood. Pristine Condition. Estimate- 150.00 - 200.00



107 Six Roly Polys

Occupied Japan circa 1940's. Made of Celluloid and Tin. 1.5" Tall. Excellent to Pristine Condition. Estimate- 125.00 - 175.00



102 Cash Register / Fez

Japanese / American - Circa 1930's / 40's. Made of Tin / Aluminum. Excellent Condition. Estimate- 50.00 - 70.00



108 Seven Roly Polys

Occupied Japan circa 1940's. Made of Celluloid and Tin. 1.5" Tall. Excellent to Pristine Condition. Estimate- 150.00 - 200.00



103 Two Santas / Box for Bellman

Occupied Japan - Circa 1948. Made of Celluloid / Cardboard. Work well. Fine or Better Condition. Estimate- 40.00 - 60.00



109 Dog Bust / Baby Rattle

Occupied Japan circa 1940's. Made of Celluloid. 4.75" Tall. Excellent Condition. Estimate- 60.00 - 90.00



104 Quacky Wacky in Box / Chick in Egg

Occupied Japan or Japan - Circa 1940's. Made of Celluloid. Works well. Fine to Pristine Condition. Estimate- 50.00 - 75.00



110 Stork and Child Rattle

Occupied Japan circa 1940's. Made of Celluloid. 3.25" Tall. Excellent Condition. Estimate- 50.00 - 75.00



105 Boxers

Occupied Japan - Circa 1940's. Made of Celluloid and Tin. Works well. Very Fine Condition. Estimate- 50.00 - 75.00



111 Bird on Perch Rattle

Occupied Japan circa 1940's. Made of Celluloid. 7" Tall. Excellent Condition. Estimate- 40.00 - 60.00



Wintertime Toys & Banks #6 February 17th, 2018 2/17/2018

Register to Bid on Liveauctioneers.com - Search for Cyber Toy Auctions!

LOT #

112 Girl with Flowers Baby Rattle

Occupied Japan circa 1940's. Made of Celluloid. 4" Diameter. Excellent Condition. Estimate- 75.00 - 100.00



LOT #

118 Tinkerbell Baby Rattle

Occupied Japan circa 1940's. Made of Celluloid. 5" Tall. Pristine Condition. Estimate- 60.00 - 90.00



113 Snow White Baby Rattle

Occupied Japan circa 1940's. Made of Celluloid. 4.25" Diameter. Pristine Condition. Estimate- 175.00 - 250.00



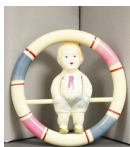
119 Girl in Flower Rattle

Occupied Japan circa 1940's. Made of Celluloid. 7.25" Tall. Excellent Condition. Estimate- 50.00 - 75.00



114 Boy in Hoop Rattle

Occupied Japan circa 1940's. Made of Celluloid. 4" Diameter. Pristine Condition. Estimate- 75.00 - 100.00



120 Clown Rattle

Occupied Japan circa 1940's. Made of Celluloid. 5.5" Tall. Excellent Condition. Estimate- 50.00 - 75.00



115 Girl Rattle

Occupied Japan circa 1940's. Made of Celluloid. 6.5" Tall. Excellent Condition. Estimate- 50.00 - 75.00



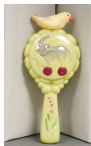
121 Boy with High Legs

Occupied Japan circa 1940's. Made of Celluloid. 6" Tall. Pristine Condition. Estimate- 50.00 - 85.00



116 Rattle with Elephant and Bird

Occupied Japan circa 1940's. Made of Celluloid. 6.25" Tall. Pristine Condition. Estimate- 75.00 - 100.00



122 Skating Couple and George & Martha Washington Danc

Occupied Japan circa 1940's. Made of Celluloid. Pristine Condition. Estimate- 40.00 - 60.00



117 Lion Motif Baby Rattle

Occupied Japan circa 1940's. Made of Celluloid. 6.5" Tall. Excellent Condition. Estimate- 50.00 - 75.00



123 Canoe / Puppy Rattle

Occupied Japan circa 1940's. Made of Celluloid. Fair to Fine Condition. Estimate- 30.00 - 50.00



Wintertime Toys & Banks #6 February 17th, 2018 2/17/2018

Register to Bid on Liveauctioneers.com - Search for Cyber Toy Auctions!

LOT #**124 Children Under Umbrella**

Occupied Japan circa 1940's. Made of Celluloid. 4.25" Tall. Fine Condition. Estimate- 30.00 - 50.00

**125 Clown with Orb Rattle**

Occupied Japan circa 1940's. Made of Celluloid. 5" Long. Excellent Condition. Estimate- 60.00 - 90.00

**126 Easter Themed Lot (3)**

Occupied Japan circa 1940's. Made of Celluloid. 3.25" - 3.75" Long. Estimate- 75.00 - 100.00

**127 Holiday Themed Lot (4)**

Occupied Japan circa 1940's. Made of Celluloid. Excellent Condition. Estimate- 80.00 - 120.00

**128 Child Themed Lot (3)**

Made in Occupied Japan / Japan circa 1940's. Made of Celluloid. 5" - 6.75" Tall. Pristine Condition. Estimate- 100.00 - 150.00

**129 Henry with Elephant**

Occupied Japan circa 1940's. Made of Celluloid. 8" Long. Nods Well. Excellent Condition. Estimate- 225.00 - 300.00

**LOT #****130 Boxers, Large Size**

Occupied Japan circa 1940's. Made of Celluloid and Tin. 6.5" Tall x 7.5" Long. Works Well. Excellent Condition. Estimate- 125.00 - 175.00

**131 Dozen Boys Riding Turtle in Original Box**

Made in Occupied Japan circa 1940's. Made of Celluloid / Cardboard Box. 4" Long. Pristine Condition. Estimate- 200.00 - 300.00

**132 Car Rattle / Sledding Girl**

Made in Occupied Japan circa 1940's. Celluloid / Tin. 3" / 4.5" Long. Works Well. Pristine Condition. Estimate- 75.00 - 100.00

**133 Celluloid Group (4)**

Made in Occupied Japan / Japan circa 1940's / 1950's. Made of Celluloid. 2.25" - 3.5" Tall. Excellent Condition (One Boxed). Estimate- 80.00 - 120.00

**134 Group of Animals (3)**

Occupied Japan circa 1940's. Made of Celluloid. 3.5" - 4.5" Long. Excellent Condition. Estimate- 50.00 - 75.00

**135 Group of Celluloid (7)**

Occupied Japan / Japan circa 1940's / 1950's. Made of Celluloid. Excellent Condition. Estimate- 60.00 - 80.00



Wintertime Toys & Banks #6 February 17th, 2018 2/17/2018

Register to Bid on Liveauctioneers.com - Search for Cyber Toy Auctions!

LOT #**136 Four Tape Measures**

Occupied Japan / Japan circa 1940's. Made of Celluloid. 1" - 2" Tall. These little guys are really cute. One missing its measuring tape. Excellent to Pristine Condition. Estimate- 70.00 - 90.00

**137 Three Donkeys**

Occupied Japan / Japan circa 1940's / 1950's. Made of Celluloid. 4" - 6" Long. Excellent Condition. Estimate- 60.00 - 90.00

**138 Duckling with Hat / Teddy Bear**

Made in Japan circa 1950's. Made of Celluloid. 5" - 6" Tall. Pristine Condition. Estimate- 90.00 - 120.00

**139 Soldier with Horse / Witch on Top of Pumpkin**

Made in Japan circa 1940's / 1950's. Made of Celluloid. 4" - 4.5" Tall. Soldier with crack in head and pumpkin glued to a bottle top. Good Condition. Estimate- 40.00 - 60.00

**140 Boxers Windup Toy**

Occupied Japan circa 1940's. Made of Tin and Celluloid. 6.25" Long. Works Well. Very Fine Condition. Estimate- 75.00 - 100.00

**141 Donald Duck Walker**

Japan circa 1940's. Made of Tin and Celluloid. 5.5" Tall. A scarce and desirable celluloid toy. Works Well. Excellent Condition. Estimate- 200.00 - 300.00

**LOT #****142 Donald Duck Roly Poly / Mickey Mouse with Umbrella**

Occupied Japan / Japan circa 1940's / 1950's. Made of Celluloid. 4.25" / 5.25" Tall. Very Fine Condition. Estimate- 150.00 - 225.00

**143 Mickey & Minnie Mouse**

Japan circa 1938. Made of Celluloid. 4.75" Tall. These classic Disney figures are colorful. Mickey with dent near his right ear. Minnie's head needs to be tightened to her body. Very Fine Condition. Estimate- 200.00 - 300.00

**144 Pinocchio Pip Squeak Toy**

Japan circa 1940's. Made of Celluloid. 5.75" Tall. Pristine Condition. Estimate- 150.00 - 200.00

**145 Mickey Mouse Pip Squeak Toy**

Japan circa 1940's. Made of Celluloid. 5.75" Tall. Pristine Condition. Estimate- 200.00 - 300.00

**146 Donald Duck Pip Squeak Toy**

Japan circa 1940's. Made of Celluloid. 5.75" Tall. Pristine Condition. Estimate- 150.00 - 250.00

**147 Uncle Sam Mail Boy / Stork**

Japan circa 1940's. Made of Celluloid. 6.25" / 7.5" Tall. Very Fine Condition (Stork supported on replaced cardboard base). Estimate- 125.00 - 175.00



Wintertime Toys & Banks #6 February 17th, 2018 2/17/2018

Register to Bid on Liveauctioneers.com - Search for Cyber Toy Auctions!

LOT #

148 Popeye Walking Figure

Japan circa 1940's. Made of Celluloid. 8.75" Tall. He moves around and his head goes up and down. Works well. Very Fine Condition (minor crease in one shoe). Estimate- 200.00 - 300.00



LOT #

154 Black Chef with Hen

Japan circa 1938. Made of Celluloid. 8" Tall. Works well. Excellent Condition. Estimate- 175.00 - 225.00



149 George & Martha Washington

Japan circa 1950. Made of Celluloid. 7.25" Tall. Excellent Condition. Estimate- 75.00 - 100.00



155 Three Felt Windup Animals with Boxes

Occupied Japan circa 1940's. Made of Tin and Felt. 5" - 6" Long. Work well. Fine to Pristine Condition. Estimate- 80.00 - 120.00



150 The Newsboy

Occupied Japan circa 1940's. Made of Tin / Celluloid Head. 6" Tall. Works well. Excellent Condition. Estimate- 60.00 - 90.00



156 Three Felt Windup Animals with Boxes

Occupied Japan circa 1940's. Made of Tin and Felt. 5" - 7" Long. Work well. Very Fine to Pristine Condition. Estimate- 80.00 - 120.00



151 Bathing Beauty / Rabbit Doll

Occupied Japan circa 1940's. Made of Celluloid / Felt. 7" - 7.25" Tall. Fine Condition (Girls arms a little loose). Estimate- 50.00 - 70.00



157 Camel / Circus Elephant with Boxed

Occupied Japan circa 1940's. Made of Tin and Felt. Excellent Condition (Elephant Box torn and missing one box end). Estimate- 60.00 - 80.00



152 Bonzo Playing Drum

Japan circa 1950. Made of Celluloid and Tin. 8.25" Tall. Works well. Excellent Condition. Estimate- 175.00 - 250.00



158 Kitty with Butterfly and Clever Bear

Occupied Japan / Japan circa 1940's / 1950's. Made of Felt and Tin. 5" Long. Work well. Excellent Condition (Boxes with tears). Estimate- 60.00 - 80.00



153 Monkey at Bat

Japan circa 1940's. Made of Tin. 7" Tall. Works well. Excellent Condition. Estimate- 150.00 - 200.00



159 Two Swan Toys

Occupied Japan circa 1940's. One Celluloid, One Tin. 4" - 5" Long. Work well. Pristine with Box. Estimate- 70.00 - 90.00



Wintertime Toys & Banks #6 February 17th, 2018 2/17/2018

Register to Bid on Liveauctioneers.com - Search for Cyber Toy Auctions!

LOT #**160 Two Wind Up Cat Toys**

Occupied Japan / Japan circa 1940's. Made of Celluloid. 4" - 5" Long. Work well. Pristine with Boxes. Estimate- 60.00 - 80.00

**LOT #****166 Branko Mechanical Acrobat**

Japan circa 1950. Tin / Celluloid. 11" Tall. We are not sure if the correct clown accompanies this lot. Works well. Mint with Box. Estimate- 175.00 - 225.00

**161 Two Windup Dog Toys**

Occupied Japan circa 1940's. One celluloid, one tin and felt. 4" - 4.5" Long. Work well. Excellent with Boxes. Estimate- 60.00 - 80.00

**167 Three Windup Cars**

Occupied Japan circa 1940's. Made of Tin. 5.5" Long. Work well. Excellent with Boxes. Estimate- 125.00 - 175.00

**162 Two Duck Toys / Penguin**

Occupied Japan circa 1940's. Made of Celluloid / Tin. Work Well. Pristine with Boxes. Estimate- 80.00 - 120.00

**168 Three Toy Autos (Two Windup)**

Occupied Japan circa 1940's. Made of Tin. 3" - 3.75" Long. Two windup work well. One Fine Condition, Two Pristine Condition. Estimate- 60.00 - 90.00

**163 Three Dog Themed Toys**

Occupied Japan circa 1940's. Made of Celluloid. 4" - 5" Long. Work well. Pristine (Boxes Fine). Estimate- 80.00 - 120.00

**169 Three Windup Cars**

Occupied Japan circa 1940's. Made of Tin. Work Well. Pristine with Boxes. Estimate- 100.00 - 150.00

**164 Three Cat Themed Toys**

Occupied Japan circa 1940's. Made of Tin / Celluloid. 4" - 5" Long. Work well. Excellent - Pristine Condition (Boxes Fine). Estimate- 90.00 - 120.00

**170 Three Windup Cars**

Occupied Japan circa 1940's. Made of Tin. Work Well. Excellent to Pristine Condition with Boxes. Estimate- 100.00 - 150.00

**165 Arty Trapeze Artist / Toto the Clown**

Occupied Japan circa 1940's. Made of Celluloid / Tin. 8" / 11" Tall. Work well. Excellent Condition (One box Excellent, other with tears). Estimate- 225.00 - 275.00

**171 Two Blue Autos**

Schuco / Friction - Germany / Occupied Japan circa 1940's. 4" / 5" Long. Made of Tin. Works well. Very Fine Condition. Estimate- 75.00 - 100.00



Wintertime Toys & Banks #6 February 17th, 2018 2/17/2018

Register to Bid on Liveauctioneers.com - Search for Cyber Toy Auctions!

LOT #**172 Two Horse Themed Toys**

Occupied Japan circa 1940's. Made of Tin. 4" - 4.5" Tall. Work well. Excellent with Boxes. Estimate- 90.00 - 120.00

**LOT #****178 Two Easter Themed Toys**

Japan circa 1960. Made of Celluloid. 6" Tall. Work well. Pristine with Boxes. Estimate- 60.00 - 80.00

**173 Swimmer / Sledder**

Occupied Japan / Japan circa 1940's / 1950's. Made of Celluloid / Tin. 5" Long. Work well. Pristine with Boxes. Estimate- 100.00 - 150.00

**179 Quacky Wacky / Jolly Penguin**

Occupied Japan / Japan circa 1940's / 1950's. Tin, Celluloid and Felt. 4" - 5.25" Tall. Work well. Very Fine to Pristine Condition with Boxes. Estimate- 75.00 - 100.00

**174 Easter Themed Toys with Umbrellas**

Japan circa 1955. Tin and Celluloid. 6.25" Tall. Work well. Excellent Condition. Estimate- 60.00 - 90.00

**180 Two Boxed Windup Toys**

Japan circa 1940's / 1950's. Tin and Felt. Work well. Excellent with Boxes. Estimate- 75.00 - 100.00

**175 Easter Themed Toys with Umbrellas**

Japan circa 1955. Tin and Celluloid. 6.5" - 7.5" Tall. Work well. Excellent Condition. Estimate- 75.00 - 100.00

**181 Two Sharpshooters**

Made by Alps circa 1955. Celluloid and Tin. 6.5" Long. Work well. Excellent to Pristine with Boxes. Estimate- 75.00 - 100.00

**176 Two Toddler Themed Toys**

Occupied Japan / Japan circa 1940's / 1950's. Celluloid, Tin and Cloth. Work well. Excellent Condition. Estimate- 50.00 - 75.00

**182 Bavarian Boy and Girl Windup**

Japan circa 1950. Celluloid and Felt. 6.5" Tall. We have not seen this cute brother and sister before. Works well. Excellent Condition. Estimate- 60.00 - 80.00

**177 Three Bird / Duck Toys**

Occupied Japan / Japan circa 1940's. Made of Tin and Felt. 3.25" - 4" Long. Work well. Excellent with Boxes. Estimate- 60.00 - 90.00

**183 Football, Baseball and Hockey Players**

Occupied Japan circa 1940's. Made of Celluloid. 5" Tall. All are in superior condition. The Hockey Player is very scarce. Work well. Pristine Condition. Estimate- 175.00 - 250.00



Wintertime Toys & Banks #6 February 17th, 2018 2/17/2018

Register to Bid on Liveauctioneers.com - Search for Cyber Toy Auctions!

LOT #**184 Drinking Sailor / Birdcage**

Occupied Japan circa 1940's. Made of Celluloid. 6.5" - 7" Tall. Work well. Very Fine Condition. Estimate- 100.00 - 150.00

**LOT #****190 Two Hula Dancers**

Occupied Japan circa 1940's. Made of Celluloid. 6.5" - 9" Tall. The taller one is fairly scarce. Work well. Excellent with Boxes. Estimate- 100.00 - 150.00

**185 Two Clown Musicians**

Japan circa 1955 / 1960. Celluloid, Rubber, Tin and Cloth. 8" - 10" Tall. Work well. Very Fine (Both are missing their drums). Estimate- 70.00 - 90.00

**191 Hula and Tap Dancers in Boxes**

Occupied Japan / Japan circa 1940's. Made of Celluloid. 6.5" / 7.25" Tall. Work well. Excellent with Boxes. Estimate- 100.00 - 150.00

**186 Dogs Playing with Shoe and Hat**

Occupied Japan circa 1940's. Made of Celluloid and Tin. 4" - 6" long. Work well. Pristine with Boxes. Estimate- 70.00 - 90.00

**192 Fancy Dan Clown with Weighted Bags**

Occupied Japan circa 1940's. Made of Celluloid. 5" Tall. Work Well. Excellent to Pristine Condition (One Boxed). Estimate- 80.00 - 120.00

**187 Seal, Duck and Pelican Toys**

Occupied Japan / Japan circa 1940's / 1950's. Made of Celluloid and Tin. 2.5" - 4" Long. Work well. Very Fine with Boxes. Estimate- 75.00 - 100.00

**193 Clown / Monkey Guitarist**

Japan circa 1940's / 1950's. Made of Celluloid. Work well. Very Fine Condition. Estimate- 50.00 - 75.00

**188 Naughty Dog / Xylophone Player**

Japan circa 1950. Made of Tin and Celluloid. Work well. Excellent (One with Box) Estimate- 75.00 - 100.00

**194 Two Hula Girls**

Occupied Japan circa 1940's. Made of Celluloid and Tin. 9" Tall. Work well. Fine Condition. Estimate- 70.00 - 90.00

**189 Cowboy / Service Boy with Boxes**

Occupied Japan circa 1940's. Made of Celluloid. 4.25" / 5.25" Tall. Work well. Excellent with Boxes. Estimate- 80.00 - 120.00

**195 Two Boxed Monkey Toys**

Occupied Japan / Japan circa 1940's. Made of Celluloid, Felt and Tin. Work well. Excellent Condition (Larger Monkey missing hand). Estimate- 60.00 - 90.00



Wintertime Toys & Banks #6 February 17th, 2018 2/17/2018

Register to Bid on Liveauctioneers.com - Search for Cyber Toy Auctions!

LOT #**196 Two Skier Toys**

Occupied Japan circa 1940's. Made of Tin and Celluloid. 6.75" Long. These toys are colorful and graphic. Work well. Pristine Condition (One with box). Estimate- 100.00 - 150.00

**197 Two Hula Girls**

Occupied Japan circa 1940's. Made of Celluloid and Tin. 9.75" Tall. Work well. Fine Condition. Estimate- 70.00 - 90.00

**198 Stork with Baby**

Occupied Japan circa 1940's. Felt, Paper Mache and Celluloid Baby. 7.5" Tall. Works well. Excellent Condition. Estimate- 80.00 - 120.00

**199 Two Cowboys with Guns**

Occupied Japan circa 1940's. Made of Celluloid and Cloth. 8.25" Tall. These guys are really colorful. Work well. Very Fine (One missing his right hand). Estimate- 80.00 - 120.00

**200 Spring Melody Pianist**

Japan circa 1960. Made of Tin and Cloth. 7.5" Tall. This toy is colorful and plays music. Works well. Pristine Condition. Estimate- 80.00 - 120.00

**201 Three Boxed Windup Toys**

Occupied Japan circa 1940's. Made of Celluloid and Tin. 3.75" - 4.75" Tall. Work well. Pristine with Boxes. Estimate- 125.00 - 175.00

**LOT #****202 Horse Race / Bell Cycle Rabbit**

Occupied Japan / Japan circa 1940's / 1950's. Made of Tin and Celluloid. Work well. Pristine with Boxes. Estimate- 80.00 - 120.00

**203 Three Monkey Toys**

Japan circa 1950's. Made of Felt and Tin. 4.5" Tall. Work well. Fine Condition. Estimate- 60.00 - 80.00

**204 Duck / Turtle**

Occupied Japan circa 1940's. Made of Tin. Work well. Excellent Condition. Estimate- 50.00 - 75.00

**205 Two Windup Toys**

Japan circa 1950's. Made of Tin. Both are extremely colorful. Work well. Pristine Condition. Estimate- 75.00 - 100.00

**206 Indian and Cowboy on Horseback**

Occupied Japan circa 1940's. Made of Celluloid. 7.25" Long. Work well. Pristine with Boxes. Estimate- 125.00 - 175.00

**207 Three Celluloid Windup Toys**

Occupied Japan circa 1940's. Made of Celluloid. 3.5" - 5" Tall. Work well. Excellent Condition. Estimate- 75.00 - 100.00



Wintertime Toys & Banks #6 February 17th, 2018 2/17/2018

Register to Bid on Liveauctioneers.com - Search for Cyber Toy Auctions!

LOT #**208 Two Pencil Sharpeners**

West Germany circa 1960. Made of Tin and Lead. 3.75" Tall. Pristine Condition. Estimate- 40.00 - 60.00

**209 Pig / Donkey with Rider**

Occupied Japan circa 1940's. Made of Celluloid. 4" - 4.75" long. Work well. Pristine with Boxes. Estimate- 80.00 - 120.00

**210 Two Boys on Tricycle**

Japan circa 1955. Made of Tin and Celluloid. 3.25" Tall. Work well. Fine Condition. Estimate- 30.00 - 50.00

**211 Rabbit / Mary & Lamb**

Japan circa 1950's. Made of Celluloid. 4" Tall. Excellent Condition (Mary without her lamb, one box torn). Estimate- 40.00 - 60.00

**212 Running Dog / British Soldier**

Occupied Japan / Japan circa 1940's. Made of Tin and Celluloid. 7" Long. Work well. Very Fine (The soldier's arms are a little loose). Estimate- 75.00 - 100.00

**213 Girl at the Beach**

Japan circa 1955. Made of Tin and Celluloid. 8.5" Tall. Works well. Very Fine Condition. Estimate- 60.00 - 90.00

**LOT #****214 Mary & Lamb / Elephant with Umbrella**

Occupied Japan circa 1940's. Made of Celluloid. 7" / 7.75" Tall. Work well. Very Fine Condition (Mary's umbrella is made of tin and missing two balloons). Estimate- 80.00 - 120.00

**215 "Cinema" Revue**

Japan circa 1955. Made of Celluloid / Wood Base. 10" Tall. Works well. Excellent Condition. Estimate- 75.00 - 100.00

**216 Elephant Drawn Go Round**

Japan circa 1955. Made of Celluloid and Tin. 6.5" L x 7" H. This toy plays music as it moves along. Works well. Pristine Condition. Estimate- 80.00 - 120.00

**217 Elephant on Scooter / Go Round**

Japan circa 1960. Made of Tin. 8" / 9" Tall. Work well. Pristine Condition. Estimate- 60.00 - 80.00

**218 Naughty Dog with Black Boy**

Occupied Japan circa 1940's. Made of Celluloid and Cloth. 6.25" Tall. Scarce and desirable. Works well. Excellent Condition. Estimate- 150.00 - 200.00

**219 Black Railway Porter**

Occupied Japan circa 1940's. Made of Celluloid. 5" Tall. Works well. Very Fine Condition. Estimate- 70.00 - 90.00



Wintertime Toys & Banks #6 February 17th, 2018 2/17/2018

Register to Bid on Liveauctioneers.com - Search for Cyber Toy Auctions!

LOT #**220 Sulky**

Occupied Japan circa 1940's. Made of Tin, Lead and Composition. 6.75" Long. Works well. Excellent Condition. Estimate- 80.00 - 120.00

**221 Bear Eating Corn**

Japan circa 1960. Made Of Tin and Cloth. 7" Tall. Works well. Very Fine Condition. Estimate- 40.00 - 60.00

**222 British Cavalry Drummer**

England - Circa 1930. Made of Tin. 5.5" Tall. Works well. Very Fine Condition. Estimate- 75.00 - 100.00

**223 Santa on Skis**

Japan circa 1955. Made of Tin and Plastic. 5" Tall. Works well. Excellent Condition. Estimate- 75.00 - 100.00

**224 Seesaw**

Gibbs Toys circa 1925. Made of Tin / Wood Base. Fine Condition. Estimate- 50.00 - 70.00

**225 Monkey on Handcar**

England - Circa 1930's. Made of Tin. 5.5" Long. This is a very colorful toy that we have previously not seen. Works well. Very Fine Condition. Estimate- 100.00 - 150.00

**LOT #****226 Train Go Round**

Japan circa 1955. Made of Tin. 5.5" Square. Great Lithography. Works well. Pristine Condition. Estimate- 60.00 - 80.00

**227 Circus Clowns Riding Elephant**

Occupied Japan circa 1940's. Made of Celluloid. 7.25" Long. Works well. Very Fine Condition. Estimate- 75.00 - 100.00

**228 Easter on Parade**

Occupied Japan circa 1940's. Made of Celluloid. 7.25" long. Works well. Pristine with Box. Estimate- 75.00 - 100.00

**229 Clown in Rocking Cart w/ Monkey Sidekick**

Japan circa 1950. 5.5" Tall. This is a great toy in bright condition incorporating tin, felt, celluloid and cloth. Works well. Pristine Condition. Estimate- 90.00 - 120.00

**230 "Jenny" the Balky Mule**

Ferdinand Strauss circa 1930's. Made of Tin. 8.75" Long. Works well. Very Fine Condition. Estimate- 60.00 - 80.00

**231 Dog in Doghouse**

Japan circa 1955. Made of Tin and Felt. 4.5" Long. He moves his head to simulate eating and drinking from his bowl. Works well. Pristine Condition. Estimate- 70.00 - 90.00



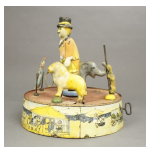
Wintertime Toys & Banks #6 February 17th, 2018 2/17/2018

Register to Bid on Liveauctioneers.com - Search for Cyber Toy Auctions!

LOT #

232 The "Ring Ling" Circus

Louis Marx & Co. circa 1930. Made of Tin. Presently not working. Fair Condition. Estimate- 100.00 - 150.00



LOT #

238 Pinocchio the Acrobat

Louis Marx & Co. circa 1939. Made of Tin. 16" Tall. Works well. Very Fine Condition. Estimate- 275.00 - 350.00



233 Windup Sedan

J. Chein & Co. circa 1925. Made of Tin. 6" Long. Works well. Very Good Condition. Estimate- 50.00 - 75.00



239 Tin Lizzy Car

Made by Arnold, Western Germany circa 1955. Made of Tin and Rubber. 9.75" Long. These toys build up a kinetic energy that can be released causing the car to move. Very Fine (Box torn and frayed). Estimate- 100.00 - 150.00



234 Wind Up Tank

Louis Marx & Co. circa 1935. Made of Tin. 4.5" Long. Works well. Excellent Condition. Estimate- 50.00 - 75.00



240 Convertible

Made by Arnold, Western Germany circa 1955. Made of Tin. 9.75" Long. Fine Condition. Estimate- 100.00 - 150.00



235 Sweeping Mammy

Lindstrom Toy Co. circa 1935. Made of Tin. 8" Tall. Works well. Fine Condition. Estimate- 75.00 - 100.00



241 Convertible

Made by Arnold, Western Germany circa 1955. Made of Tin. 9.75" Long. Excellent Condition (Missing Power Cord). Estimate- 75.00 - 100.00



236 Cuckoo Clock

Japan circa 1960. Made of Tin. 7" Tall. Works well. Mint in Box. Estimate- 75.00 - 100.00



242 "Primal" Sports Car

Made by Arnold, Western Germany circa 1955. Made of Tin. 9.75" Long. Excellent Condition (Missing one tail light). Estimate- 100.00 - 150.00



237 Humphrey Mobile

Wyandotte Toy Co. circa 1938. Made of Tin. 7" Tall. Works well. Excellent Condition. Estimate- 225.00 - 300.00



243 Primal "HP" Police Car

Made by Arnold, Western Germany circa 1955. Made of Tin. 9.75" Long. Very Fine Condition. Estimate- 100.00 - 150.00



Wintertime Toys & Banks #6 February 17th, 2018 2/17/2018

Register to Bid on Liveauctioneers.com - Search for Cyber Toy Auctions!

LOT #**244 Primal Convertible**

Made by Arnold, Western Germany, circa 1955. Made of Tin. 9.75" Long. Very Fine Condition. Estimate- 100.00 - 150.00

**245 World War II Era American Jeep**

Made by Arnold, Western Germany, circa 1955. Made of Tin. 6.5" Long. Very Fine Condition. Estimate- 75.00 - 100.00

**246 Locomotive and Tender Bell Toy**

French circa 1910. Made of Tin. 11.75" Long. The rear with a clapper to ring a bell as the toy is pulled a long. Very Fine Condition. Estimate- 225.00 - 300.00

**247 Submarine "A2004"**

Made by Arnold, Germany circa 1938. Made of Tin. 11" Long. Excellent Condition. Estimate- 100.00 - 150.00

**248 Submarine "SSN 25"**

Made by Marusan Toys. Japan circa 1950. Made of Tin. 10" Long. The gyroscopic mechanism works well. Very Fine (The bridge is loose). Estimate- 90.00 - 120.00

**249 Nautilus Submarine "SSN 58"**

Made by Marusan Toys circa 1955. Made of Tin. 12.5" Long. Gyroscopic mechanism works well. Excellent Condition. Estimate- 100.00 - 150.00

**LOT #****250 Submarine**

Made by Gebruder Bing. Germany - Circa 1920. Made of Tin. 10" Long. This is a fantastic hand painted windup sub. Works well. Very Fine Condition (Missing a Flag). Estimate- 150.00 - 200.00

**251 Submarine "SSN 25"**

Made by Marusan Toys circa 1955. Made of Tin. 10" Long. Pristine Condition. Estimate- 100.00 - 150.00

**252 Diving Submarine with English Flag**

Made by CK. Japan circa 1935. Made of Tin. 10" Long. This is a hand painted submarine and its gyroscopic mechanism works well. Excellent with Box. Estimate- 125.00 - 175.00

**253 The "Sea Wolf" Submarine**

Made by Sutcliffe. English circa 1960. Made of Tin and Plastic. 8.5" Long. Pristine with Box. Estimate- 75.00 - 100.00

**254 The "Nautilus" Submarine**

Made by Sutcliffe. English circa 1960. Made of Tin and Plastic. 8.5" Long. Pristine with Box. Estimate- 75.00 - 100.00

**255 Diving Submarine with English Flag**

Made by Wolverine. Pittsburgh, Pa circa 1950. Made of Tin. 12" Long. Excellent Condition (Missing rear flag). Estimate- 90.00 - 120.00



Wintertime Toys & Banks #6 February 17th, 2018 2/17/2018

Register to Bid on Liveauctioneers.com - Search for Cyber Toy Auctions!

LOT #**256 Submarine**

Made by CK. Japan circa 1935. Made of Tin. 12.5" Long. The gyroscopic mechanism appears to need a minor adjustment to function. Very Fine Condition. Estimate- 175.00 - 225.00

**257 Nautilus "919" Submarine**

Made by JEP. French circa 1940. Made of Tin and Brass. 16" Long. Excellent Condition. Estimate- 225.00 - 275.00

**258 Exploding Battleship**

American circa 1915. Made of Tin. 13.5" Long. Very Fine Paint (Missing two gun turrets). Estimate- 75.00 - 100.00

**259 Battleship**

Made by Gebruder Bing. Germany circa 1920. Made of Tin. 14.25" Long. Fine Condition (Missing 2 lifeboats) Estimate- 350.00 - 450.00

**260 "Hendrick Hudson" Ferry Boat**

Made by CK. Japan circa 1935. Made of Tin. 10" Long. This ferry has great lithographic with a hand painted hull. It is missing 2 of its 4 rudders. Very Fine Condition. Estimate- 200.00 - 300.00

**261 "Sunny Andy" Ferry Boat**

Made by Wolverine Mfg. Co. Pittsburgh, Pa. circa 1935. Made of Tin. 13" Long. The toy is bright and the bell mechanism is still operative. Excellent Condition. Estimate- 125.00 - 175.00

**LOT #****262 Row Boat**

Probably European circa 1920. Made of Tin and Composition. 10" Long. Fine Condition. Estimate- 60.00 - 90.00

**263 Sparkling Aeroplane with Box**

Made by Louis Marx & Co. New York City circa 1938. Made of Tin. 13" Long x 18" Wingspan. Near Mint (Box tattered and missing end flaps). Estimate- 150.00 - 200.00

**264 Kiddie Cyclist**

American circa 1930. Made of Tin. 9.5" Tall. Very Good Condition. Estimate- 100.00 - 150.00

**265 Seesaw Bell Toy**

Gong Bell Mfg Co. Connecticut circa 1935. Made Of Tin and Wood. 11" Long. Very Good Condition. Estimate- 80.00 - 120.00

**266 Train Accessories**

American / German circa 1920's - 1940's. Various Materials. The train engine is Lionel and the accessories mostly German. Very Good to Very Fine Condition. Estimate- 125.00 - 175.00

**267 Toyland Milk Wagon**

Made by Louis Marx & Co. New York City circa 1940's. Made of Tin. 10" Long. Pristine with Box. Estimate- 75.00 - 100.00



Wintertime Toys & Banks #6 February 17th, 2018 2/17/2018

Register to Bid on Liveauctioneers.com - Search for Cyber Toy Auctions!

LOT #

268 Hay Wagon

Made in Germany circa 1910. Made of Wood, Gesso, Faux Fur. 21" Long. This toy is in wonderful condition. Very Fine Condition. Estimate- 225.00 - 275.00



269 Orkin Craft Speed Boat with Box

Made by Calwis Industries. Beverly Hills, California circa 1930's. Made of Tin and Sheet Steel. 23" Long. This is a classic Art Deco Era speed boat that is in Pristine Condition. Estimate- 500.00 - 700.00



270 Train Station with Glass Awning

Made by Kibri. German circa 1930. Made of Tin and Glass. 12" Wide x 12" High x 14.5" Deep. In Very Fine overall condition with one very minor platform dent. Estimate- 350.00 - 450.00



271 Pair of Shoes

German - Circa 1920. Made of Spelter. 5.75" Long. Excellent Condition. Estimate- 75.00 - 100.00



272 Lincoln's Home / South Paris Bank

American - Circa 1960 / 1940. Made of Spelter. 3.75" / 4" Long. Excellent Condition. Estimate- 60.00 - 90.00



273 U. S. Capitol / Washington Trust

American - Circa 1940's / 1950's. Made of Spelter. 3.75" / 4.5" Long. Excellent Condition. Estimate- 60.00 - 90.00



LOT #

274 Three Cylindrical Banks

German / American - Circa 1930's / 1940's. Made of Tin. 3" - 3.75" Tall. Very Fine Condition. Estimate- 50.00 - 75.00



275 Two Modern Building Banks

American - Circa 2010. Made of Aluminum. Pristine Condition. Estimate- 30.00 - 50.00



276 Native American Bust / Chalet

German - Circa 1920's / 1930's. 3.75" / 5" Tall. Made of Tin / Spelter. Fine Condition. Estimate- 60.00 - 90.00



277 Safe / Mailbox

American - Circa 1925 / 1950. Made of Cast Iron. 4" / 4.25" Tall. Excellent Condition. Estimate- 60.00 - 90.00



278 Union Safe / Stenciled Door Safe

American - Circa 1880's / 1890's. 3.25" / 4.25" Tall. Fair to Very Fine (Stenciled door with repair to top plate). Estimate- 80.00 - 120.00



279 Fido on Pillow

Hubley Mfg. Co. Pennsylvania - Circa 1930. 7.5" Long. Made of Cast Iron. An Old Repaint. Estimate- 60.00 - 90.00



Wintertime Toys & Banks #6 February 17th, 2018 2/17/2018

Register to Bid on Liveauctioneers.com - Search for Cyber Toy Auctions!

LOT #**280 Penny Save Cash Register Bank**

American - Circa 1890's. Made of Cast Iron. A very scarce penny registering bank. Very Fine Condition. Estimate- 225.00 - 300.00

**LOT #****286 Bureau Caisse with Finial**

French - Circa 1920. 9.5" Tall. Made of Cast Iron. This is the scarce cast iron version of the bank. Fine Condition. Estimate- 250.00 - 350.00

**281 Independence Hall - Small Version**

Enterprise Mfg. Co. Philadelphia - Circa 1876. Made of Cast Iron. Very Fine Condition. Estimate- 400.00 - 600.00

**287 Beehive on Pedestal Base**

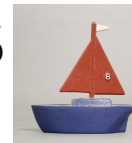
American - Circa 1880. 10" Square - 8" High. Made of Cast Iron. We have only seen this bank one other time. The Beehive is a symbol of Industry and Thrift. This is an impressive bank in very fine paint condition but a piece 3.5" long x .5" high is missing from the left side of a pedestal. Estimate- 600.00 - 900.00

**282 Tower Bank**

Kyser & Rex. Philadelphia - Circa 1890. Made of Cast Iron. Fine Condition. Estimate- 400.00 - 500.00

**288 SBCCA "Orlando" Convention Bank**

American - Dated "88". Made of Cast Iron. Pristine Condition. Estimate- 40.00 - 60.00

**283 Independence Hall - Large Version**

Enterprise Mfg. Co. Philadelphia - Circa 1876. Made of Cast Iron. Very Fine Condition. Estimate- 600.00 - 800.00

**289 Quacking Duck**

Made in Japan circa 1935. 4.25" Tall. Made of Lead. Very Fine Condition. Estimate- 40.00 - 60.00

**284 Log Cabin - Chimney Right**

Kyser & Rex. Philadelphia - Circa 1880's. Made of Cast Iron. Very Fine Condition. Estimate- 150.00 - 225.00

**290 Three Prosperity Banks**

American - Circa 1920's. 4.5" tall with Handle up. Made of Tin. Very Fine Condition. Estimate- 60.00 - 90.00

**285 Blackpool Tower**

Sydenham & McOustra. England - Circa 19101. Made of Cast Iron. An old repaint. Estimate- 60.00 - 90.00

**291 Two Chein Banks**

J. Chein & Co. New Jersey - Circa 1930's. Made of Tin. Very Fine Condition. Estimate- 60.00 - 90.00



Wintertime Toys & Banks #6 February 17th, 2018 2/17/2018

Register to Bid on Liveauctioneers.com - Search for Cyber Toy Auctions!

LOT #

292 Sparkasse Bank

German - Circa 1930. Made of Wood. Excellent Condition (Minor sliver of wood missing from back of roof). Estimate- 75.00 - 100.00



LOT #

298 Wind Up Cat Bank

Made by Kenton Toys. Japan circa 1910. Made of Tin / Faux Fur. Works Well. Very Fine Condition. Estimate- 175.00 - 250.00



293 Savo / Chipmunk

American - Circa 1930's. Made of Tin / Plastic. Fine Condition. Estimate- 40.00 - 60.00



299 English Cottage Biscuit Tin / Bank

England - Circa 1950. 6" long. Made of Tin. Pristine Condition. Estimate- 50.00 - 75.00



294 Two Calumet Banks

American - Circa 1920's. Made of Tin / Paper Litho. One the scarce still bank the other the taller mechanical bank. In Fine / Very Fine Condition. Estimate- 175.00 - 225.00



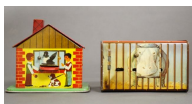
300 Baseball Player

A. C. Williams. Ravenna, Oh. - Circa 1920. Made of Cast Iron. Fine Paint (Replaced Screw) Estimate- 150.00 - 200.00



295 Hippo / Birdhouse Banks

European - Circa 1930's / 1940's. Made of Tin. Pristine Condition. Estimate- 60.00 - 90.00



301 Minuteman

Hubley Mfg. Co. Lancaster, Pa. - Circa 1920. Made of Cast Iron. Fine Condition. Estimate- 120.00 - 150.00



296 Cylinder Banks for Saving

American - Circa 1920's / 1930's. 2.75" Tall. Made of Tin. Very Fine Condition. Estimate- 60.00 - 90.00



302 Santa with Tree

Hubley Mfg. Co. Lancaster, Pa. - Circa 1915. Made of Cast Iron. Fine Condition (Face Repainted). Estimate- 225.00 - 300.00



297 Watch me Grow

English - Circa 1950's. 6.5" Tall and a grower. Made of Tin. Excellent Condition. Estimate- 50.00 - 75.00



303 I Luv a Copper

England - Circa 1915. Made of Brass. Excellent (Replaced Screw) Estimate- 90.00 - 120.00



Wintertime Toys & Banks #6 February 17th, 2018 2/17/2018

Register to Bid on Liveauctioneers.com - Search for Cyber Toy Auctions!

LOT #

304 Man on Bale of Cotton

U. S. Hardware. American - Circa 1890.
Made of Cast Iron. A really scarce bank.
Good (No Trap). Estimate- 450.00 - 700.00



LOT #

310 Feed the Kitty

Made in Pittsburgh, Pa. - Circa 1930's.
Made of Lead. Fine Condition (No Trap).
Estimate- 40.00 - 60.00



305 Cupola - Medium, Yellow

J. & E. Stevens. Cromwell, Ct. - Circa 1875. Made of Cast Iron. Very Good (Replaced Screw). Estimate- 60.00 - 90.00



311 Yellow Cab Still Bank

Arcade Mfg. Co. Freeport, IL - Circa 1925. 8" Long. Made of Cast Iron. Very Fine and Bright condition. Estimate- 550.00 - 750.00



306 Cupola - Medium, Brick Red

J. & E. Stevens. Cromwell, Ct. - Circa 1875. Made of Cast Iron. Very Good (Replaced Screw). Estimate- 60.00 - 90.00



312 Armored Car

A. C. Williams. Ravenna, Oh. - Circa 1915. Made of Cast Iron. This is a very scarce and highly sought after still bank. Fine Condition. Estimate- 1,400.00 - 1,800.00



307 Street Clock

Arcade Mfg. Co. Freeport, IL. Circa 1925. Made of Cast Iron with Paper Inserts. Fine Condition. Estimate- 175.00 - 225.00



313 Tammany Bank

J. & E. Stevens. Cromwell, Ct. Made of Cast Iron. Good Condition. Estimate- 150.00 - 200.00



308 Time Around the World

Arcade Mfg. Co. Freeport, IL. Circa 1925. Made of Cast Iron. Very Fine Condition Estimate- 175.00 - 225.00



314 Jolly N. Aluminum

Starkies Patent. Fine Condition. Estimate- 125.00 - 175.00



309 Time is Money Clock

Henry Hart Co. Detroit, Mi. - Circa 1885. A very scarce bank, but missing its paper dial and hands. Made of Cast Iron and Tin. Good Condition. Estimate- 100.00 - 150.00



315 Archie Andrews

Made in England - Circa 1930. Fine Condition. Estimate- 150.00 - 200.00



Wintertime Toys & Banks #6 February 17th, 2018 2/17/2018

Register to Bid on Liveauctioneers.com - Search for Cyber Toy Auctions!

LOT #

316 Treasure Chest Musical Bank

American - Circa 1930. Made of White Metal. Fine Condition. Estimate- 350.00 - 500.00



LOT #

322 Captain Marvel / Dime Register

Fawcett Publications. American - Circa 1948. Made of Tin. Very Fine Condition. Estimate- 60.00 - 90.00



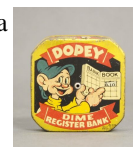
317 Electric Safe

Louis Mfg. American - Dated 1904. Made of Tin and Steel. Fine Condition. Estimate- 80.00 - 120.00



323 Dopey Dime Register

Walt Disney Productions. American - Circa 1939. Made of Tin. Excellent Condition. Estimate- 60.00 - 90.00



318 Hubley Elephant

Hubley Mfg. Co. Lancaster, Pa. Made of Cast Iron. Excellent Condition. Estimate- 350.00 - 450.00



324 Donald Duck Dime Register

Walt Disney Productions. American - Circa 1939. Made of Tin. Excellent Condition. Estimate- 100.00 - 150.00



319 5 Cent Adding Bank

American - Circa 1890. Made of Lead. Fine Condition. Estimate- 450.00 - 650.00



325 Mickey Mouse Dime Register

Walt Disney Productions. American - Circa 1939. Made of Tin. Excellent Condition. Estimate- 175.00 - 250.00



320 Novelty Bank

J. & E. Stevens. Cromwell, Ct. - Circa 1880's. Made of Cast Iron. Fine Paint (A wire was put between the chimneys for easy carrying, needs a spring to operate). Estimate- 400.00 - 600.00



326 Thrifty Pig

Hubley Mfg. Co. Lancaster, Pa. - Circa 1935. Made of Cast Iron. Very Good Condition. Estimate- 50.00 - 75.00



321 Thrifty Dime Register

American - Circa 1930's. Made of Tin. Excellent Condition. Estimate- 50.00 - 75.00



327 Lion / Horse Banks

A. C. Williams. Ravenna, Oh. - Circa 1920. Made of Cast Iron. Very Good (Lion has a new screw) Estimate- 30.00 - 50.00



Wintertime Toys & Banks #6 February 17th, 2018 2/17/2018

Register to Bid on Liveauctioneers.com - Search for Cyber Toy Auctions!

LOT #**328 Two Time is Money Banks**

American - Circa 1920's. Made of Cast Iron. Fine Condition. Estimate- 60.00 - 80.00

**329 Two Elephant Banks**

American - Circa 1920's / 1930's. Made of Cast Iron / Aluminum. Very Good Condition. Estimate- 40.00 - 60.00

**330 Cash Register / Horseshoe with mesh**

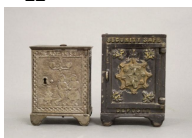
Arcade Mfg. Co. Freeport, IL - Circa 1920. Made Tin and Cast Iron. Fine Condition. Estimate- 75.00 - 100.00

**331 Safe Deposit (4" H) / Safe with Cross (4.25" H)**

American - Circa 1890. Made of Cast Iron. Fine Condition. Estimate- 60.00 - 90.00

**332 Roller Safe / Security Safe Deposit 4.25" H**

Kyser & Rex. Philadelphia - Circa 1890. Made of Cast Iron. Very Good Condition. Estimate- 60.00 - 90.00

**333 Royal Safe Deposit (6" H)**

American - Circa 1890. Made of Cast Iron. Old repaint (missing part of dial). Estimate- 30.00 - 50.00

**334 Horse Head Safe (5.5" H) / Coin Deposit (5.5" H)**

Kenton Hardware - Circa 1910. Made of Cast Iron. Very Good / Fine Condition. Estimate- 125.00 - 175.00

**LOT #****335 Animal Safe**

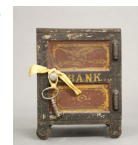
Kyser & Rex. Philadelphia, Pa. - Circa 1890. 3" H. Made of Cast Iron. Very Fine Condition. Estimate- 75.00 - 100.00

**336 Security Safe Deposit**

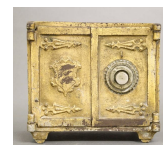
Kyser & Rex. Philadelphia, Pa. - Circa 1890. 4.75" H. Made of Cast Iron. Very Good Condition. Estimate- 75.00 - 100.00

**337 National Bank**

American - Circa 1890. 4.5" Tall. Made of Cast Iron. Very Good Condition. Estimate- 150.00 - 200.00

**338 Double Door Medallion Safe**

American - Circa 1890. 5.875" H x 6.375" W x 4.5" D. Made of Cast Iron. An Old Repaint. Estimate- 75.00 - 100.00

**339 Army Safe**

American - Circa 1915. 4.125" H. Made of Cast Iron. Fine Condition. Estimate- 40.00 - 60.00

**340 Jewel Safe - Electroplated**

Kenton hardware. Kenton, Oh. - circa 1900. 5.25" h. Made of Cast Iron and Tin. Excellent Condition. Estimate- 150.00 - 200.00



Wintertime Toys & Banks #6 February 17th, 2018 2/17/2018

Register to Bid on Liveauctioneers.com - Search for Cyber Toy Auctions!

LOT #

341 Fishing Bears Bank

Made in Japan circa 1960. 7.25" Square. Made of Tin. Fine Condition (No Fish Present) Estimate- 100.00 - 150.00



342 Sentry Bank

German - Circa 1920. 8.25" H. Made of Tin. Fine Condition (The base is upside down) Estimate- 275.00 - 375.00



343 Mr. Woodpeckers Nest with Box

Made by Marusan Corp. Japan - Circa 1960. Made of Tin. Excellent Condition (Box with Tears) Estimate- 75.00 - 100.00



344 Telephone Booth with Box

Cragston Toys. Japan - Circa 1955. Made of Tin. Pristine Condition (Box with minor tears) Estimate- 60.00 - 80.00



345 Southern Comfort

American - Circa 1950's. 8.25" L. Made of Aluminum. Excellent Condition. Estimate- 80.00 - 120.00



346 The "Sportsman" Bank

Duro Mold Co. Detroit, MI - Circa 1955. Made of Aluminum. Pristine Condition. Estimate- 100.00 - 150.00



LOT #

347 Shoot Your Savings Bank

Duro Mold Co. Detroit, MI. 10.25" H. Made of Aluminum. Made to commemorate John Glenn's orbiting the earth three times in 1962. Excellent Condition (Missing Trap). Estimate- 125.00 - 175.00



348 Rocket Bank

Duro Mold Co. Detroit, MI - circa 1960. 8" Long. Made of Aluminum. Excellent Condition. Estimate- 80.00 - 120.00



349 "Saturn" Missile Bank

Made in Japan circa 1968. 9.5" H. Made of Tin. Very Fine Condition (Missing tip and coin trap). Estimate- 75.00 - 100.00



350 "Aim to Save" Rocket Bank

Duro Mold Co. Detroit, MI. 10.25" H. Made of Aluminum. Excellent Condition. Estimate- 125.00 - 175.00



351 Strato Bank

Duro Mold Co. Detroit, MI circa 1962. 8.25" Long. Made of Aluminum. Excellent Condition. Estimate- 75.00 - 100.00



352 Destination Moon Bank

Duro Mold Co. Detroit, MI. 10.25" H. Made of Aluminum. Pristine Condition. Estimate- 100.00 - 150.00



Wintertime Toys & Banks #6 February 17th, 2018 2/17/2018

Register to Bid on Liveauctioneers.com - Search for Cyber Toy Auctions!

LOT #

353 "USA" Rocket

Vaeumet Inc. American. 11.5" H. Made of Aluminum. Very Fine Condition (Missing rubber tip)_. Estimate- 60.00 - 90.00



354 Merry Go Round

Crest Specialty Corp. Chicago, IL. - Circa 1965. Coins are deposited and a bar is moved leftwards and released causing the horses to run. It's a parlor gambling bank. Made of Tin and Plastic. Pristine with Box. Estimate- 125.00 - 175.00



355 Coca Cola Bank

Line Mar Toys. Japan - Circa 1960. Made of Tin and Plastic. Very Fine Condition. Estimate- 80.00 - 120.00



356 Candy Salesman Bank

Japan - Circa 1960. Made of Tin and Plastic. Excellent Condition. Estimate- 75.00 - 100.00



357 Elephant with Howdah - Small

A. C. Williams. Made of Cast Iron. Pristine Condition. Estimate- 40.00 - 60.00



358 Elephant Small

Wing Mfg. Co. Made of Cast Iron. Fine Condition. Estimate- 60.00 - 80.00



LOT #

359 Penguin

American - Circa 1930's. 5.5" Tall. Made of Aluminum. Very Fine Condition (No Trap). Estimate- 30.00 - 50.00



360 Elephant - Swivel Trunk

American - Circa 1910. A scarce bank. Made of Cast Iron. Very Fine Condition. Estimate- 125.00 - 175.00



361 Dog with Pack - Small

A. C. Williams circa 1915. Made of Cast Iron. Excellent Condition. Estimate- 50.00 - 75.00



362 Dog with Pack - Large

A. C. Williams circa 1915. Made of Cast Iron. Pristine Condition. Estimate- 100.00 - 150.00



363 Dog "I Hear a Call"

A. C. Williams circa 1915. Made of Cast Iron. Very Fine Condition. Estimate- 100.00 - 150.00



364 Cat with Ball

Grey Iron Casting Co. Circa 1920. Made of Cast Iron. Fine Condition. Estimate- 90.00 - 120.00



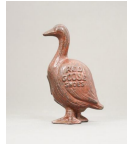
Wintertime Toys & Banks #6 February 17th, 2018 2/17/2018

Register to Bid on Liveauctioneers.com - Search for Cyber Toy Auctions!

LOT #

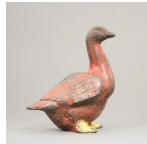
365 Red Goose Shoes

Arcade mfg. Co. Circa 1920. Made of Cast Iron. Very Fine Condition. Estimate- 75.00 - 100.00



366 Red Goose Shoes - Squatty Version

Arcade Mfg. Co. circa 1920. A scarce Bank. Made of Cast Iron. Good Condition. Estimate- 100.00 - 150.00



367 Horse on Tub

A. C. Williams circa 1920. Made of Cast Iron. Very Fine Condition. Estimate- 100.00 - 150.00



368 "Teddy" Bear

Arcade Mfg. Co. circa 1910. Made of Cast Iron. Fine Condition. Estimate- 90.00 - 120.00



369 Angry Bear

German -C circa 1920's. Made of Spelter. Fine Condition. Estimate- 90.00 - 120.00



370 Bull

American - Circa 1910. 4.75" long. This is a really scarce still bank that. Made of Cast Iron. Fine Condition (1/2 of a horn missing). Estimate- 75.00 - 100.00



LOT #

371 Rooster

A. C. Williams circa 1920. Made of Cast Iron. Excellent Condition. Estimate- 60.00 - 90.00



372 Baby in Cradle

American - Circa 1920. Made of Cast Iron. Fine Condition. Estimate- 125.00 - 175.00



373 Clown

A. C. Williams circa 1925. Made of Cast Iron. Fine Condition. Estimate- 60.00 - 90.00



374 Santa with Tree

Hubley Mfg. Co. circa 1920. Made of Cast Iron. Very Good Condition. Estimate- 250.00 - 350.00



375 Officer with Sabre

Hubley Mfg. Co. circa 1915. Made of Cast Iron. Very Good Condition. Estimate- 175.00 - 250.00



376 Minuteman

Hubley Mfg. Co. circa 1915. Made of Cast Iron. Fine Condition. Estimate- 175.00 - 250.00



377 Football Player

A. C. Williams circa 1915. Made of Cast Iron. Fine Condition. Estimate- 150.00 - 200.00



Wintertime Toys & Banks #6 February 17th, 2018 2/17/2018

Register to Bid on Liveauctioneers.com - Search for Cyber Toy Auctions!

LOT #

378 Billy Bounce

Wing Mfg. Co. circa 1910. A scarce and cute rotund little man. Made of Cast Iron. Very Good Condition. Estimate- 225.00 - 300.00



379 Dutch Girl

A. C. Williams circa 1915. Made of Cast Iron. Very Good Condition. Estimate- 175.00 - 225.00



380 Rumpelstiltskin

Ober mfg. Co. circa 1905. A scarce little guy. Made of Cast Iron. Fine Condition. Estimate- 200.00 - 300.00



381 General Pershing

Grey Iron Casting Co. circa 1920. Made of Cast Iron. Fine Condition. Estimate- 35.00 - 55.00



382 Lucky Joe Bank

American circa 1930's. 4.5" H. Made of Glass and Tin. Very Fine Condition. Estimate- 50.00 - 75.00



383 Charlie Chaplin Candy Bank

American - Circa 1925. 4" H. Made of Glass and Tin. Good Condition (one tiny base chip). Estimate- 50.00 - 75.00



LOT #

384 Trolley with Passengers

A. C. Williams circa 1925. Made of Cast Iron. Very Fine Condition. Estimate- 225.00 - 300.00



385 Lincoln High Hat

Probably Kyser & Rex circa 1880's. Made of Cast Iron. Very Fine Condition. Estimate- 50.00 - 75.00



386 Grandpa's Hat

Probably Kyser & Rex circa 1880's. Made of Cast Iron. Fine Condition. Estimate- 150.00 - 200.00



387 Two Daisy Safes

Kyser & Rex circa 1880's. Made of Cast Iron. Fine Condition. Estimate- 90.00 - 120.00



388 Fidelity Safe - Small

Kyser & Rex circa 1880's. 2.875" H. Made of Cast Iron. Good Condition. Estimate- 50.00 - 75.00



389 Two Panel Door Safe

Kyser & Rex circa 1880's. 3" H. Made of Cast Iron. Very Fine. Estimate- 90.00 - 120.00



Wintertime Toys & Banks #6 February 17th, 2018 2/17/2018

Register to Bid on Liveauctioneers.com - Search for Cyber Toy Auctions!

LOT #**390 U. S. Navy Safe**

Arcade Mfg. circa 1902. 3.375" H. Very Good Condition (Doesn't lock and small piece of right side missing) Estimate- 75.00 - 100.00

**391 Ideal Safe Deposit**

American - Circa 1895. 4.25" H. A great electroplated example. Made of Cast Iron. Excellent Condition. Estimate- 90.00 - 120.00

**392 Young America Safe**

Kyser & Rex circa 1880's. Made of Cast Iron. Excellent Condition. Estimate- 75.00 - 100.00

**393 Ideal Security Bank**

American - Circa 1895. 5.5" H. Made of Cast Iron. Very Fine Condition. Estimate- 75.00 - 100.00

**394 Jewel Safe with Grill**

J. & E. Stevens circa 1895. 6.25" H. Made of Cast Iron. Fine Condition. Estimate- 125.00 - 175.00

**395 Space Heater with Birds**

England - Circa 1895. Made of Cast Iron. Fine Condition. Estimate- 75.00 - 100.00

**LOT #****396 Space Heater with Flowers**

England - Circa 1895. Made of Cast Iron. Fine Condition. Estimate- 100.00 - 150.00

**397 Two Urns**

European circa 1880's. 3.5" - 4.25" Tall. Made of Silver Plated Tin. Fine Condition. Estimate- 75.00 - 100.00

**398 Two Tankards**

European circa 1910. 3" - 3.5" Tall. Made of Silver Plated Tin. Fine Condition (The skinnier one with broken rear hinge). Estimate- 60.00 - 80.00

**399 Windmill**

European circa 1910. 6" H. Made of Silver Plated Tin. Fine Condition. Estimate- 75.00 - 100.00

**400 Beehive with Medallion**

German - Circa 1920's. 3.25" H. Made of Silvered Lead. Fine Condition. Estimate- 50.00 - 75.00

**401 Stop Sign - Large**

Dent Hardware circa 1920. 6" H. Made of Cast Iron. Fine Condition. Estimate- 275.00 - 375.00



Wintertime Toys & Banks #6 February 17th, 2018 2/17/2018

Register to Bid on Liveauctioneers.com - Search for Cyber Toy Auctions!

LOT #

402 Battleship Oregon - Large Size

J. & E. Stevens circa 1901. 6.25" L. This is a scarce painted version. Made of Cast Iron. Very Good Condition. Estimate- 350.00 - 450.00



LOT #

408 "Fobrux" Radio

European - Circa 1935. Made of Porcelain over Cast Iron. Excellent Condition. Estimate- 75.00 - 100.00



403 Globe on Arc

Grey Iron Casting Co. circa 1905. 5.5" H. Made of Cast Iron. Very Fine Condition. Estimate- 100.00 - 150.00



409 Mosque Small

American - Circa 1900. Made of Cast Iron. Very Fine Condition. Estimate- 60.00 - 80.00



404 Globe on Wire arc

Arcade Mfg. Co. circa 1910. 4.625" H. Made of Cast Iron. Fine Condition. Estimate- 175.00 - 250.00



410 State Bank Tiny

Kenton Hardware circa 1899. Made of Cast Iron. Very Fine Condition. Estimate- 75.00 - 100.00



405 Globe Bank

Enterprise Mfg. Co. circa 1870's. 5.75" H. Made of Cast Iron. Very Good Condition. Estimate- 200.00 - 300.00



411 State Bank

Kenton Hardware circa 1899. 4.125" H. Made of Cast Iron. Very Good Condition (Missing a tiny piece of cupola). Estimate- 40.00 - 60.00



406 Crosley Radio

Kenton Hardware circa 1930's. Made of Cast Iron. Excellent Condition. Estimate- 90.00 - 120.00



412 Dome Mosque Smallest

A. C. Williams circa 1915. 3" H. Made of Cast Iron. Fine Condition. Estimate- 50.00 - 75.00



407 Mayflower Refrigerator

American - Circa 1930. A scarce bank. Made of Cast Iron. Fine Condition (No Trap). Estimate- 75.00 - 100.00



413 Quadrofoil

American - Circa 1880's. 3.125" H. Made of Cast Iron. Very Fine Condition. Estimate- 75.00 - 100.00



Wintertime Toys & Banks #6 February 17th, 2018 2/17/2018

Register to Bid on Liveauctioneers.com - Search for Cyber Toy Auctions!

LOT #**414 Deposit Bank**

Grey Iron Casting Co circa 1899. 4.25" H.
Made of Cast Iron. Pristine Condition.
Estimate- 125.00 - 175.00

**LOT #****420 One Car Garage**

A. C. Williams circa 1915. Made of Cast
Iron. Fine Condition. Estimate- 100.00 -
150.00

**415 Small Domed Mosque**

Made by A. C. Williams. Ohio - Circa
1920. A fantastic and colorful old repaint.
Estimate- 30.00 - 50.00

**421 Colonial House - Large**

A. C. Williams circa 1920. Made of Cast
Iron. Very Good Condition. Estimate-
40.00 - 60.00

**416 Mosque - Three Story**

Grey Iron Casting Co. circa 1915. 3.5" H.
Made of Cast Iron. Fine Condition.
Estimate- 40.00 - 60.00

**422 Bungalow / Cottage**

Grey Iron Casting Co. circa 1920. Made of
Cast Iron and Tin. Very Fine Condition.
Estimate- 175.00 - 225.00

**417 Crown Bank - Medium**

J. & E. Stevens circa 1890. 3.75" H. Made
of Cast Iron. Fine Condition. Estimate-
75.00 - 100.00

**423 State Bank**

Kenton hardware circa 1899. 6" H. A
wonderful example with a key-lock door.
Made of Cast Iron. Very Fine Condition.
Estimate- 125.00 - 175.00

**418 "Banque" with Rooster Finial**

French - Circa 1910. 5.25" H. Made of
Brass. Very Fine Condition. Estimate-
100.00 - 150.00

**424 Home Savings Bank**

Shimer Toy co circa 1895. 6" H. A scarce
bank in fine condition. Made of Cast Iron.
Fine Condition. Estimate- 200.00 - 300.00

**419 Two Story Six Sided Building**

American - Circa 1915. 3.5" H. Made of
Cast Iron. Very Fine Condition. Estimate-
125.00 - 175.00

**425 Finial bank**

Kyser & Rex circa 1890. 5.75" H. A scarce
and desirable bank. Both the left and right
side have a very old repair under the eaves
of the roof line. Made of Cast Iron. Fine
Condition. Estimate- 100.00 - 150.00



Wintertime Toys & Banks #6 February 17th, 2018 2/17/2018

Register to Bid on Liveauctioneers.com - Search for Cyber Toy Auctions!

LOT #**426 Domed Bank - Large**

A. C. Williams circa 1915. Made of Cast Iron. Very Fine Condition. Estimate- 50.00 - 75.00

**427 Two Woolworth Buildings - Small**

Kenton hardware circa 1935. Made of Cast Iron. Very Fine Condition. Estimate- 50.00 - 75.00

**428 Dome Bank 2nd Largest, Skyscraper, Sm.**

A. C. Williams circa 1915. Made of Cast Iron. Very Fine Condition. Estimate- 80.00 - 120.00

**429 High Rise - 2nd Tallest**

Kenton hardware circa 1915. 5.75" H. An excellent condition example of this scarce bank. Made of Cast Iron. Excellent Condition. Estimate- 225.00 - 275.00

**430 Bethel College**

American circa 1930. 6.5" Long. Made of Cast Iron. Excellent Condition. Estimate- 80.00 - 120.00

**431 National Recording Bank**

Magic Introduction Co. circa 1895. Made of Cast Iron. Very Fine Condition. Estimate- 150.00 - 200.00

**LOT #****432 Small Cast Iron Dome Still Bank and Highrise Still**

A. C. Williams / Kenton Hardware circa 1915. Both Made of Cast Iron. Highrise Still Bank is the second smallest. Very Good to Fine Condition. Estimate- 50.00 - 75.00

**433 Medium Cast Iron Crown Still Bank**

J. & E. Stevens circa 1890. Made of Cast Iron. Good Condition (Replaced Twist Pin) Estimate- 30.00 - 50.00

**434 Two Cast Iron Dome Still Banks**

A. C. Williams circa 1915. Made of Cast Iron. Good Condition. Estimate- 40.00 - 60.00

**435 Cast Iron Deposit Still Bank**

Grey Iron Casting Co. circa 1900. Made of Cast Iron. Very Good Condition. Estimate- 50.00 - 75.00

**436 Gold Cast Iron State Still Bank**

Kenton Hardware circa 1899. 4" H. A scarce bank in gold paint. Made of Cast Iron. Very Fine Condition. Estimate- 150.00 - 200.00

**437 Large Cast Iron Victorian House Still Bank**

Shimer Mfg. Co. circa 1895. Made of Cast Iron. Good Condition (Replaced Twist Pin) Estimate- 50.00 - 75.00



Wintertime Toys & Banks #6 February 17th, 2018 2/17/2018

Register to Bid on Liveauctioneers.com - Search for Cyber Toy Auctions!

LOT #

438 Cast Iron Castle Still Bank

Kyser & Rex circa 1882. This is quite a scarce bank. Sadly, the left facing turret has been repaired and the twist pin is replaced. Made of Cast Iron. Fine Paint Condition. Estimate- 225.00 - 300.00



LOT #

444 Cast Iron Bug Bootscrape

American - Circa 1930. 10" Long. A great Art Deco look. Made of Cast Iron. Excellent Condition. Estimate- 125.00 - 175.00



439 Cast Iron Lion and Elephant Still Banks

A. C. Williams circa 1920. Made of Cast Iron. Fine Condition. Estimate- 50.00 - 75.00



445 Cast Iron Rabbit in Cabbage Still Bank

Made by Kilgore Mfg. Westerville, Ohio. Made of Cast Iron. Repainted Condition. Estimate- 175.00 - 250.00



440 Cast Iron Beauty and Cat on Tub Still Banks

Arcade / A. C. Williams circa 1920. Made of Cast Iron. Both repainted. Estimate- 35.00 - 55.00



446 Hall's Excelsior Cast Iron Mechanical Bank

Made by J. & E. Stevens of Cromwell, Connecticut. Made of Cast Iron. Very Good Condition (Replaced Cashiers Head) Estimate- 150.00 - 200.00



441 Cast Iron Puppo Still Bank with Bee on Butt

Hubley Mfg. Co. circa 1930. Made of Cast Iron. Very Good Condition. Estimate- 40.00 - 60.00



447 Stevens Jolly N. Cast Iron Mechanical Bank

J. & E. Stevens Cromwell, Connecticut. Made of Cast Iron. Repainted Condition. Estimate- 175.00 - 225.00



442 Security Safe Deposit Cast Iron Still Bank

Kyser & Rex circa 1880's. 4.75" H. Made of Cast Iron. Very Fine Condition. Estimate- 60.00 - 90.00



448 Travel and Transportation Building

Preferred Services Co. Chicago circa 1933. 5.25" Wide. Made of White Metal. Fine Condition. Estimate- 60.00 - 90.00



443 Security Safe Deposit Cast Iron Still Bank

Kyser & Rex circa 1880's. 4.5" H. Made of Cast Iron. Excellent Condition. Estimate- 75.00 - 100.00



449 European Register Bank

German - Circa 1930's. 5" H. Made of Tin. Very Fine Condition. Estimate- 50.00 - 75.00



Wintertime Toys & Banks #6 February 17th, 2018 2/17/2018

Register to Bid on Liveauctioneers.com - Search for Cyber Toy Auctions!

LOT #

450 Leapfrog Bank

Shepard Hardware circa 1890's. Made of Cast Iron. Good Condition. Estimate- 600.00 - 800.00



LOT #

456 Watchdog Safe

J. & E. Stevens circa 1890's. Made of Cast Iron. Fine Paint (Mechanism not locking the door). Estimate- 225.00 - 300.00



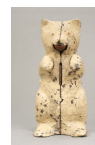
451 Telephone Bank

J. & E. Stevens circa 1928. Made of Cast Iron and Wood. Excellent Condition. Estimate- 350.00 - 500.00



457 Bear Slot in Chest

Kenton Hardware Company circa 1910's. This is a scarce bank. Made of Cast Iron. Repainted Long Ago. Estimate- 500.00 - 700.00



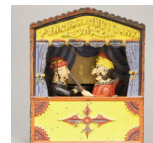
452 Bulldog, Red Blanket

J. & E. Stevens circa 1880. Made of Cast Iron. Very Fine Condition. Estimate- 750.00 - 950.00



458 Punch and Judy

Shepard Hardware Company circa 1880's. Made of Cast Iron. Very Good Condition. Estimate- 550.00 - 750.00



453 Creedmoor

J. & E. Stevens circa 1880. Made of Cast Iron. Very Fine Condition. Estimate- 400.00 - 600.00



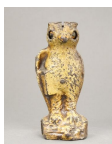
459 Jolly N. High Hat

John Harper & Co. England - Circa 1900's. Made of Cast Iron. Fine Condition (Needs a Clean). Estimate- 350.00 - 500.00



454 Owl Slot in Head

Kilgore Mfg. Co. circa 1920's. Made of Cast Iron. Fine Condition. Estimate- 350.00 - 450.00



460 Two Frogs

J. & E. Stevens circa 1880's. Made of Cast Iron. Very Good Condition (Needs a Clean). Estimate- 600.00 - 800.00



455 Presto

Kyser & Rex Co. circa 1890's. Made of Cast Iron. Excellent Condition (Could use a clean). Estimate- 350.00 - 500.00



461 Mule Entering Barn

J. & E. Stevens circa 1880's. Made of Cast Iron. Excellent Condition. Estimate- 900.00 - 1,200.00



Wintertime Toys & Banks #6 February 17th, 2018 2/17/2018

Register to Bid on Liveauctioneers.com - Search for Cyber Toy Auctions!

LOT #

462 Baseball and Three Bats

Hubley Mfg. Co. circa 1910's. Made of Cast Iron. Very Fine Condition. Estimate- 550.00 - 750.00



LOT #

468 Three Dog Still Banks

American - Circa 1900's. Made of Cast Iron. Very Fine to Fine Condition. Estimate- 80.00 - 120.00



463 Santa with Wire Tree

Ives, Blakeslee circa 1890's. Made of Cast Iron. Fine Condition. Estimate- 350.00 - 450.00



469 Three Dog Still Banks

American - Circa 1900's. Two Made of Cast Iron, One Aluminum. Fine to Excellent Condition. Estimate- 80.00 - 120.00



464 Transvaal Money Box

John Harper & Co. England - Circa 1880's. Cast Iron. Excellent Condition (Pipe is a Replacement). Estimate- 350.00 - 450.00



470 Three Pig Still Banks

A. C. Williams circa 1910's. Made of Cast Iron. Very Fine Condition. Estimate- 60.00 - 80.00



465 Small GE Refrigerator

Hubley Mfg. Co. circa 1930's. Made of Cast Iron. Excellent Condition. Estimate- 60.00 - 90.00



471 Three Bears

John Harper / A. C. Williams circa 1910's. Made of Cast Iron. Fine Condition. Estimate- 70.00 - 90.00



466 Heatrolla

Kenton Hardware Co. circa 1930. Made of Cast Iron. Pristine Condition. Estimate- 50.00 - 75.00



472 Three Still Banks

Three Reproduction Banks. Made of Cast Iron. Excellent Condition. Estimate- 40.00 - 60.00



467 Monkey Bank

Hubley Mfg. Co. circa 1920's. Made of Cast Iron. Very Fine Condition (No Trap). Estimate- 300.00 - 400.00



473 Three Small Reindeer, One Doe

A. C. Williams circa 1920's. Made of Cast Iron. Good Condition (One Repainted). Estimate- 70.00 - 90.00



Wintertime Toys & Banks #6 February 17th, 2018 2/17/2018

Register to Bid on Liveauctioneers.com - Search for Cyber Toy Auctions!

LOT #

474 Three Reindeer

A. C. Williams circa 1920's. Made of Cast Iron. All Repainted. Estimate- 50.00 - 75.00



LOT #

480 Two Cows

A. C. Williams circa 1920's. Made of Cast Iron. Both Repainted. Estimate- 40.00 - 60.00



475 Fido

Hubley Mfg. Co. circa 1920's. Made of Cast Iron. Excellent Condition. Estimate- 50.00 - 75.00



481 Two Small Turkeys

A. C. Williams circa 1910's. Made of Cast Iron. Very Fine Condition. Estimate- 70.00 - 90.00



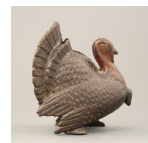
476 Scottie, Standing

American - Circa 1900's. Made of Cast Iron. Excellent Condition. Estimate- 75.00 - 100.00



482 Large Turkey

A. C. Williams circa 1910's. Made of Cast Iron. Fine Condition. Estimate- 125.00 - 175.00



477 Puppo, Bee on Butt

Hubley Mfg. Co. circa 1920's. Made of Cast Iron. Very Fine Condition. Estimate- 60.00 - 90.00



483 Hen

American - Circa 1970's. Made of Cast Iron. Pristine Condition. Estimate- 40.00 - 60.00



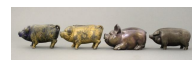
478 Wirehaired Terrier

Hubley Mfg. Co. circa 1920's. Made of Cast Iron. Excellent Condition. Estimate- 80.00 - 120.00



484 Four Pigs

American - Circa 1910 - 1930. Made of Cast Iron. Very Good to Excellent Condition. Estimate- 125.00 - 175.00



479 Two Roosters

A. C. Williams circa 1910's, Made of Cast Iron. One Very Good Condition, One Repainted. Estimate- 50.00 - 70.00



485 Fido on Pillow

Hubley Mfg. Co. circa 1920's. Made of Cast Iron. Fine Condition. Estimate- 175.00 - 250.00



Wintertime Toys & Banks #6 February 17th, 2018 2/17/2018

Register to Bid on Liveauctioneers.com - Search for Cyber Toy Auctions!

LOT #

486 Save For a Rainy Day Duck

Hubley Mfg. Co. circa 1930's. Made of Cast Iron. Excellent Condition. Estimate- 75.00 - 100.00



487 Circus Elephant

Hubley Mfg. Co. circa 1930's. Made of Cast Iron. Fine Condition. Estimate- 90.00 - 120.00



488 Kitty

Hubley Mfg. Co. circa 1930's. Made of Cast Iron. Fine Condition. Estimate- 40.00 - 60.00



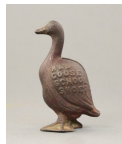
489 The Wise Pig

Hubley Mfg. Co. circa 1930's. Made of Cast Iron. Very Fine Condition. Estimate- 60.00 - 90.00



490 Red Goose School Shoes

Arcade Mfg. Co. circa 1920's. Made of Cast Iron. Good Condition. Estimate- 70.00 - 90.00



491 Duck

A. C. Williams circa 1910's. Made of Cast Iron. Fine Condition. Estimate- 60.00 - 90.00



LOT #

492 Small Lamb

American circa 1880's. Made of Cast Iron. Very Good Condition. Estimate- 70.00 - 90.00



493 1884 Rabbit

American - Dated 1884. Made of Cast Iron. Poor Condition. Estimate- 175.00 - 250.00



494 Horse with Flynet

Arcade Mfg. Co. circa 1910's. Made of Cast Iron. Fair Condition. Estimate- 100.00 - 150.00



495 Horse with Belly Band

American - Circa 1910. Made of Cast Iron. Very Good Condition. Estimate- 125.00 - 175.00



496 Standing Rabbit

A. C. Williams circa 1910's. Made of Cast Iron. Fair Condition. Estimate- 100.00 - 150.00



497 Three Horses

American - Circa 1910's. Made of Cast Iron. Good to Fine Condition (One Repainted). Estimate- 60.00 - 90.00



498 Two Horses

American - Circa 1910's. Made of Cast Iron. Fair Condition. Estimate- 60.00 - 90.00



Wintertime Toys & Banks #6 February 17th, 2018 2/17/2018

Register to Bid on Liveauctioneers.com - Search for Cyber Toy Auctions!

LOT #

499 Two Small Buffalos

A. C. Williams circa 1920's. Made of Cast Iron. One Fine Condition, One Repainted. Estimate- 50.00 - 70.00



LOT #

505 Four Animal Paperweights

American - Circa 1930's. Made of Cast Iron. Good to Fine Condition. Estimate- 40.00 - 60.00



500 Two Horses

American Circa 1910's. Made of Cast Iron. Good Condition. Estimate- 60.00 - 90.00



506 Four Dog Paperweights

American - Circa 1930's. Made of Cast Iron. Very Fine Condition. Estimate- 50.00 - 75.00



501 Two Tub Banks

A. C. Williams circa 1920's. Made of Cast Iron. Very Good Condition. Estimate- 70.00 - 90.00



507 Seated Cat

Arcade circa 1910's. Made of Cast Iron. Fine Condition. Estimate- 75.00 - 100.00



502 Small Camel / Be Wise Owl

American - Circa 1900's. Made of Cast Iron. Both Repainted. Estimate- 40.00 - 60.00



508 Bull Terrier

Vindex Toys circa 1930's. Made of Cast Iron. Fine Condition. Estimate- 75.00 - 100.00



503 Small Camel / Songbird

A. C. Williams circa 1910's. Made of Cast Iron. Both Repainted (Part of Tail Feathers broken off of Songbird). Estimate- 40.00 - 60.00



509 Rhino

Arcade Mfg. Co. circa 1920's. Made of Cast Iron. Good Condition. Estimate- 150.00 - 200.00



504 Donkey / Teddy Bear

American - Circa 1920's. Made of Cast Iron. Teddy Bear Repainted, Donkey Poor Condition. Estimate- 50.00 - 75.00



510 Large Lamb

Grey Iron Casting Co. circa 1920's. Made of Cast Iron. Very Good Estimate- 100.00 - 150.00



511 Rabbit Laying Down

American circa 1900's. Made of Cast Iron. Fine Condition. Estimate- 150.00 - 200.00



Wintertime Toys & Banks #6 February 17th, 2018 2/17/2018

Register to Bid on Liveauctioneers.com - Search for Cyber Toy Auctions!

LOT #

512 Begging Rabbit

A. C. Williams circa 1910's. Made of Cast Iron. Repainted. Estimate- 30.00 - 40.00



513 Beauty on Oval Base

A. C. Williams circa 1920's. Made of Cast Iron. Very Fine Condition. Estimate- 120.00 - 150.00



514 Horseshoe with Wire Mesh

Arcade circa 1920's. Made of Cast Iron. Fine Condition. Estimate- 30.00 - 50.00



515 Lion on Wheels

A. C. Williams circa 1920's. Made of Cast Iron. Fair Condition. Estimate- 60.00 - 90.00



516 Horse on Wheels

A. C. Williams circa 1920's. Made of Cast Iron. Fair Condition. Estimate- 70.00 - 100.00



517 Elephant on Wheels

A. C. Williams circa 1920's. Made of Cast Iron. Very Good (New Screw). Estimate- 60.00 - 90.00



518 Camel Large

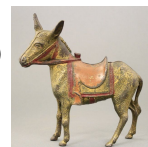
A. C. Williams circa 1910's. Made of Cast Iron. Good Condition. Estimate- 90.00 - 120.00



LOT #

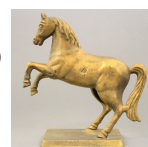
519 Donkey Large

A. C. Williams circa 1920's. Made of Cast Iron. Very Fine Condition. Estimate- 70.00 - 90.00



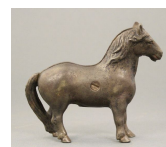
520 Horse on Base

A. C. Williams circa 1920's. Made of Cast Iron. Very Fine Condition. Estimate- 70.00 - 90.00



521 My Pet Horse

Arcade Mfg. Co. circa 1920's. Made of Cast Iron. Fair Condition. Estimate- 70.00 - 90.00



522 Bulldog Seated

Hubley Mfg. Co. circa 1920's. Made of Cast Iron. Excellent Condition. Estimate- 70.00 - 90.00



523 Good Luck Horseshoe

Arcade Mfg. Co. circa 1920's. Made of Cast Iron. Very Good Condition. Estimate- 60.00 - 80.00



524 Bear Stealing Pig

American - Circa 1900. Made of Cast Iron. Very Good Condition. Estimate- 225.00 - 300.00



Wintertime Toys & Banks #6 February 17th, 2018 2/17/2018

Register to Bid on Liveauctioneers.com - Search for Cyber Toy Auctions!

LOT #

525 Large Reindeer

A. C. Williams circa 1920's. Made of Cast Iron. Repainted. Estimate- 50.00 - 75.00



526 Three Wise Monkeys

A. C. Williams circa 1910's. Made of Cast Iron. Fine Condition. Estimate- 150.00 - 200.00



527 Oriental Camel

Kyser & Rex circa 1890. Made of Cast Iron. Very Fine Condition (Base Repainted). Estimate- 200.00 - 300.00



528 Elephant with Tucked Trunk

Arcade Mfg. Co. circa 1910's. Made of Cast Iron. Fine Condition. Estimate- 50.00 - 75.00



529 Small Elephant Swings Trunk

A. C. Williams circa 1900's. Made of Cast Iron. Fine Condition. Estimate- 60.00 - 80.00



530 Elephant with Howdah

A. C. Williams circa 1910's. Made of Cast Iron. Good Condition. Estimate- 40.00 - 60.00



531 Two Tub Banks

A. C. Williams circa 1920's. Made of Cast Iron. Very Fine Condition. Estimate- 75.00 - 100.00



LOT #

532 Two Lions

American circa 1910 - 1925. Made of Cast Iron. One Repainted, One Fair condition. Estimate- 50.00 - 75.00



533 Three Tub Banks

A. C. Williams circa 1920's. Made of Cast Iron. Two Fair Condition, One Repainted. Estimate- 50.00 - 75.00



534 Two Kitchen Appliances

American circa 1930's / 1940's. Made of White Metal. Good Condition. Estimate- 40.00 - 60.00



535 Two Elephants

American circa 1900 - 1910. Made of Cast Iron. Good Condition (Twist Pin replaced with a screw on larger elephant). Estimate- 75.00 - 125.00



536 Three Lions

American circa 1900 - 1920. Made of Cast Iron. Poor to Good Condition (Small Lion a bit Rusty). Estimate- 40.00 - 60.00



537 Three Lions

American circa 1900 - 1920. Made of Cast Iron. Two Fine Condition, Large Lion Repainted. Estimate- 60.00 - 80.00



Wintertime Toys & Banks #6 February 17th, 2018 2/17/2018

Register to Bid on Liveauctioneers.com - Search for Cyber Toy Auctions!

LOT #

538 Two Animals

American circa 1910 - 1920. Made of Cast Iron. Elephant with Raised Coin Slot is scarce. Good Condition. Estimate- 75.00 - 125.00



539 Three Mailboxes

American circa 1910 - 1930. Made of Cast Iron. Good to Very Good. Estimate- 50.00 - 75.00



540 Two Hanging Mailboxes

A. C. Williams circa 1925. Made of Cast Iron. Fine Condition. Estimate- 40.00 - 60.00



541 Two Small Standing Mailboxes

Hubley Mfg. Co. circa 1920's. Made of Cast Iron. Very Fine Condition. Estimate- 60.00 - 80.00



542 Two Mailboxes

American - Circa 1920's / 1930's. Made of Cast Iron. Very Fine Condition. Estimate- 50.00 - 75.00



543 Two Mailboxes

American - Circa 1900's / 1930's. Made of Cast Iron. Very Fine Condition. Estimate- 100.00 - 150.00



LOT #

544 U. S. Mail Bank with Combination Lock

American circa 1900's. Made of Cast Iron. 6 7/8" H. Excellent Condition. Estimate- 200.00 - 300.00



545 Two Stoves

American circa 1920's / 1930's. Made of Cast Iron. Very Good to Fine Condition. Estimate- 150.00 - 200.00



546 Stove / Chest of Drawers

American circa 1940's. Good Condition. Estimate- 20.00 - 30.00



547 Three GE Refrigerators

Hubley Mfg. Co. circa 1930's. Made of Cast Iron. Good to Fine Condition. Estimate- 100.00 - 150.00



548 Two Kelvinator Refrigerators

American circa 1930's. Made of Cast Iron. Good to Fine Condition. Estimate- 125.00 - 175.00



549 Two Radios

Arcade / Kenton circa 1930's. Made of Cast Iron. Good Condition. Estimate- 40.00 - 60.00



550 The North Pole Bank (Reproduction)

American circa 1990's. Made of Cast Iron. Excellent Condition. Estimate- 20.00 - 40.00



Wintertime Toys & Banks #6 February 17th, 2018 2/17/2018

Register to Bid on Liveauctioneers.com - Search for Cyber Toy Auctions!

LOT #

551 Hall Clock

Arcade Mfg. Co. circa 1920's. Made of Cast Iron. Very Good Condition. Estimate- 100.00 - 150.00



LOT #

557 Two Clocks

A. C. Williams / Arcade Mfg. Co. circa 1920's. Made of Cast Iron. Fine Condition. Estimate- 50.00 - 75.00



552 Encyclopedia Savings Bank

American - Circa 1897. Made of Tin. Excellent Condition. Estimate- 40.00 - 60.00



558 "Buddy Bank"

American - Circa 1918. Made of Metal. Fine Condition. Estimate- 20.00 - 30.00



553 Crystal Bank

Arcade Mfg. Co. circa 1910's. Made of Cast Iron and Glass. Fine Condition. Estimate- 60.00 - 90.00



559 \$100,000 Moneybag

A scarce still bank. Made of Cast Iron. Very Fine Condition. Estimate- 100.00 - 150.00



554 Two Mesh Banks

Arcade Mfg. Co. circa 1910's. Made of Cast Iron and Mesh. Very Good Condition. Estimate- 50.00 - 75.00



560 Lincoln High Hat

American circa 1890's. Made of Cast Iron. Very Good Condition. Estimate- 50.00 - 75.00



555 Three Basket Banks

Designed by Chas. A. Braun circa 1900's. Made of Cast Iron / Steel. Very Good Condition. Estimate- 75.00 - 100.00



561 Derby Hat

American circa 1890's. Made of Cast Iron. Fine Condition. Estimate- 75.00 - 100.00



556 Two Clocks

Arcade Mfg. Co. / A. C. Williams circa 1920's. Made of Cast Iron. Fine Condition. Estimate- 75.00 - 100.00



562 Coronation Crown Elizabeth II

England circa 1950's. Made of Cast Iron. Very Fine Condition. Estimate- 25.00 - 50.00



563 Grandpa's Hat

American circa 1890's. Made of Cast Iron. Very Good Condition. Estimate- 100.00 - 150.00



Wintertime Toys & Banks #6 February 17th, 2018 2/17/2018

Register to Bid on Liveauctioneers.com - Search for Cyber Toy Auctions!

LOT #

564 Liberty Bell with Yoke

Arcade Mfg. Co. circa 1930's. Made of Cast Iron. Excellent Condition. Estimate- 20.00 - 30.00



LOT #

570 Shell Out

J. & E. Stevens circa 1890's. Made of Cast Iron. Good Condition. Estimate- 100.00 - 150.00



565 1926 Liberty Bell

Grey Iron Casting Co. circa 1928. Made of Cast Iron. Excellent Condition. Estimate- 30.00 - 50.00



571 Steamboat

A. C. Williams circa 1910's. Made of Cast Iron. Good Condition. Estimate- 60.00 - 80.00



566 Washington Bell with Yoke

Grey Iron Casting Co. circa 1932. Made of Cast Iron. Very Fine Condition. Estimate- 60.00 - 80.00



572 City Bank with Directors Room

John Harper Ltd. circa 1911. Made of Cast Iron. Very Fine Condition. Estimate- 80.00 - 120.00



567 Three Tanks

American circa 1920's. Made of Cast Iron. Good Condition. Estimate- 75.00 - 100.00



573 Two-Tone Tiny Mosque

A. C. Williams circa 1920's. Made of Cast Iron. Very Fine Condition (Replaced Twist Pin). Estimate- 40.00 - 60.00



568 Apollo 8 / Graf Zeppelin

John Wright circa 1968 / A. C. Williams circa 1920's. Made of Cast Iron. Excellent Condition / Good Condition. Estimate- 100.00 - 150.00



574 Jewel Bank

American circa 1895. Made of Cast Iron. Very Fine Patina (No Trap). Estimate- 80.00 - 120.00



569 Arcade Steamboat

Arcade Mfg. Co. circa 1910's. Made of Cast Iron. Fine Condition. Estimate- 100.00 - 150.00



575 Multicolor Four Tower Bank

J. & E. Stevens circa 1890. Made of Cast Iron. Fine Condition (Yellows Windows Repainted Long Ago). Estimate- 200.00 - 300.00



Wintertime Toys & Banks #6 February 17th, 2018 2/17/2018

Register to Bid on Liveauctioneers.com - Search for Cyber Toy Auctions!

LOT #

576 Cast Iron Pagoda Bank

England circa 1895. Made of Cast Iron. Very Good Condition. Estimate- 125.00 - 175.00



LOT #

582 Main Street Trolley without Passengers

A. C. Williams circa 1920's. Made of Cast Iron. Very Good Condition. Estimate- 80.00 - 120.00



577 Space Heater with Birds

England circa 1910. Made of Cast Iron. Very Fine Condition. Estimate- 75.00 - 100.00



583 Globe on Arc

Grey Iron Casting Co. circa 1900's. Made of Cast Iron. Fine Condition. Estimate- 50.00 - 75.00



578 Mermaid

Grey Iron Casting Co. circa 1910's. Made of Cast Iron. Fine Condition. Estimate- 175.00 - 225.00



584 1 1/2" Shell Bank

Ferrosteel Mfg. Co. circa 1919. Made of Steel. Very Good Condition. Estimate- 20.00 - 30.00



579 Dolphin

Grey Iron Casting Co. circa 1910's. Made of Cast Iron. Excellent Condition. Estimate- 200.00 - 300.00



585 Gas Pump

American - Circa 1920's. Made of Cast Iron. Fine Condition (Missing Hose). Estimate- 75.00 - 100.00



580 Main Street Trolley with Passengers

A. C. Williams circa 1920's. Made of Cast Iron. Good Condition (Wheels Replaced). Estimate- 60.00 - 90.00



586 Tally Ho

Chamberlain & Hill. England. Made of Cast Iron. Very Good Condition. Estimate- 40.00 - 60.00



581 Auto Four Passengers

A. C. Williams circa 1910's. Made of Cast Iron. Repainted Condition. Estimate- 100.00 - 120.00



587 Three Banks

American / European circa 1930's / 1940's. Made of Wood / Tin. Very Good to Fine Condition. Estimate- 30.00 - 50.00



Wintertime Toys & Banks #6 February 17th, 2018 2/17/2018

Register to Bid on Liveauctioneers.com - Search for Cyber Toy Auctions!

LOT #**588 Two Figural Reproductions**

American circa 1990's. Made of Cast Iron.
Excellent Condition. Estimate- 30.00 -
50.00

**589 Baby in Cradle (Late 2nd Casting)**

American circa 1960's. Made of Cast Iron.
Excellent Condition Estimate- 40.00 -
60.00

**590 Two Faced Black Boy, Large and Small**

A. C. Williams circa 1910's. Made of Cast
Iron. One Fine Condition, One Repainted.
Estimate- 50.00 - 75.00

**591 Billiken**

A. C. Williams circa 1910's. Made of Cast
Iron. Fine Condition. Estimate- 40.00 -
60.00

**592 Billiken on Throne**

A. C. Williams circa 1910's. Made of Cast
Iron. Good Condition. Estimate- 50.00 -
75.00

**593 Rumpelstiltskin**

Ober Mfg. Co. circa 1905. A scarce little
guy. Made of Cast Iron. Very Fine
Condition. Estimate- 150.00 - 200.00

**LOT #****594 Two Figural Banks**

American circa 1910's / 1920's. Made of
Cast Iron. Good Condition (Mutt & Jeff
with replaced screw). Estimate- 75.00 -
100.00

**595 Two Figural Banks**

American circa 1910's / 1920's. Made of
Cast Iron. Both Repainted. Estimate- 30.00
- 50.00

**596 Benton, Goddess of Amiability**

Japan circa 1930's. Made of Lead. Good
Condition. Estimate- 25.00 - 50.00

**597 Indian Bust with Headdress**

European circa 1930's. Made of Lead.
Good Condition. Estimate- 50.00 - 75.00

**598 Middy**

American circa 1890's. Made of Cast Iron.
Very Good Condition. Estimate- 75.00 -
100.00

**599 Campbell Kids**

A. C. Williams circa 1910's. Made of Cast
Iron. Very Fine Condition. Estimate- 50.00
- 75.00

**600 Boy Scout**

A. C. Williams circa 1910's. Made of Cast
Iron. Very Fine Condition. Estimate- 75.00
- 100.00



Wintertime Toys & Banks #6 February 17th, 2018 2/17/2018

Register to Bid on Liveauctioneers.com - Search for Cyber Toy Auctions!

LOT #

601 Dutch Girl

Hubley Mfg. Co. circa 1930's. Made of Cast Iron. Fine Condition. Estimate- 50.00 - 70.00



602 Dutch Boy on Barrel

Hubley Mfg. Co. circa 1930's. Made of Cast Iron. Pristine Condition. Estimate- 60.00 - 80.00



603 Buster Brown & Tiger

A. C. Williams circa 1910's. Made of Cast Iron. Poor Condition (Partially Repainted). Estimate- 50.00 - 75.00



604 Captain Kidd

American circa 1900's. Made of Cast Iron. Good Condition (New Screw). Estimate- 75.00 - 100.00



605 Policeman

Arcade Mfg. Co. circa 1920's. Made of Cast Iron. Poor Condition. Estimate- 25.00 - 50.00



606 Buster Brown & Tiger

A. C. Williams circa 1910's. Made of Cast Iron. Good Condition. Estimate- 100.00 - 150.00



LOT #

607 The Indian Family

J. M. Harper circa 1905. A scarce bank. Made of Cast Iron. Very Fine Condition. Estimate- 500.00 - 700.00



608 Doughboy

Grey Iron Casting Co. circa 1929. Made of Cast Iron. Very Fine Condition. Estimate- 225.00 - 275.00



609 Saluting Sailor

American circa 1915. Made of Cast Iron. Fine Condition. Estimate- 75.00 - 125.00



610 Foxy Grandpa

Wing Mfg. circa 1900's. Made of Cast Iron. Fine Condition. Estimate- 75.00 - 125.00



611 Santa Claus

Hubley Mfg. Co. circa 1910's. Made of Cast Iron. Good Condition (Replaced Twist Pin). Estimate- 50.00 - 75.00



612 Two Figural Banks

American circa 1930's / 1950's. Made of Tin and Plastic. Excellent Condition. Estimate- 50.00 - 75.00



613 Brinks Truck

American. Made of Metal. Very Fine Condition. Estimate- 50.00 - 75.00



Wintertime Toys & Banks #6 February 17th, 2018 2/17/2018

Register to Bid on Liveauctioneers.com - Search for Cyber Toy Auctions!

LOT #

614 Thoroughbred

Made by Hubley circa 1940's. Made of Cast Iron. Very Fine Condition (Rust on Screw). Estimate- 50.00 - 75.00



LOT #

620 Three Safes

American circa 1890 - 1910. Made of Cast Iron. Good to Fine Condition. Estimate- 80.00 - 120.00



615 1918 Tank

A. C. Williams circa 1920's. Made of Cast Iron. Excellent Condition. Estimate- 75.00 - 100.00



621 Three Safes

J. & E. Stevens / Kenton Hardware circa 1890 / 1910. 3 5/8" - 3 1/2" H. Made of Cast Iron. Good to Fine Condition. Estimate- 80.00 - 120.00



616 Tank

England circa 1920's. Made of Cast Iron. 8.25" L. Very Fine Condition. Estimate- 100.00 - 150.00



622 Three Key Lock Safe No. 50

J. & E. Stevens circa 1890's. 4 1/8" H. Made of Cast Iron. In Good to Very Fine Condition. Estimate- 80.00 - 120.00



617 Moline Trust and Savings Bank

Bankers Thrift Corp. Chicago circa 1920's. Made of Tin. Excellent Condition. Estimate- 20.00 - 40.00



623 Three Safes

American circa 1890's - 1930's. Made of Cast Iron and Tin. Good to Fine Condition. Estimate- 80.00 - 120.00



618 Phillips 66 Glass Cube

American - Circa 1950's. Made of Glass. Excellent Condition. Estimate- 20.00 - 40.00



624 Three Safes

American - Circa 1890's - 1910's. Made of Cast Iron. National Good Condition (Crack near Coin Slot), other two Excellent Condition. Estimate- 150.00 - 200.00



619 Animal Themed Bank

Spanish circa 1950's. Made of Tin. Excellent Condition. Estimate- 20.00 - 40.00



625 Three Safes

American - Circa 1890's - 1910's. Made of Cast Iron. All Fine Paint Condition (Security Safe, Door Broken Out). Estimate- 100.00 - 150.00



Wintertime Toys & Banks #6 February 17th, 2018 2/17/2018

Register to Bid on Liveauctioneers.com - Search for Cyber Toy Auctions!

LOT #**626 Three Safes**

American - Circa 1890's - 1910's. Made of Cast Iron. All Good Condition (White City Puzzle Safe with chip out of top right corner of door and dial replaced with a screw). Estimate- 100.00 - 150.00

**627 Two Security Safe Deposits**

American - Circa 1910's. 4.25" H / 4.75" H. Made of Cast Iron. Good to Fine Condition (Taller one with crack lower right). Estimate- 100.00 - 150.00

**628 Two Safes**

J. & E. Stevens / Grey Iron Casting Co. circa 1910's. Made of Cast Iron. Treasure Safe a Repaint, Coin Deposit Good. (Both Banks have been pried open. Treasure safe does not lock, Coin Deposit has added materials to "lock"). Estimate- 100.00 - 150.00

**629 Liberty Dime Safe**

Kyser & Rex circa 1920's. Made of Cast Iron. 3" H. Very Fine Condition. Estimate- 150.00 - 200.00

**630 Two Savings Deposits**

Kenton Hardware circa 1910's. 4" H. Good Condition. Estimate- 75.00 - 100.00

**631 National Safe**

American - Circa 1900's. 4.75" H. Good Condition. Estimate- 100.00 - 150.00

**LOT #****632 Burglar Proof House Safe**

J. & E. Stevens circa 1890's. 5 7/8" H. Fine Condition. Estimate- 150.00 - 200.00

**633 The Keyless Safety Deposit**

The Keyless Lock Co. 5 7/8"H. Made of Cast Iron. Fine Condition (Crack Near Top Dial). Estimate- 80.00 - 120.00

**634 The Bank of Industry**

Kenton Hardware circa 1900's. 5 3/8" H. Made of Cast Iron. Very Fine Condition. Estimate- 125.00 - 175.00

**635 The Globe**

Kenton Hardware circa 1910's. 5 3/8" H. Made of Cast Iron. Good Condition. Estimate- 125.00 - 175.00

**636 The Keyless Safety Deposit**

The Keyless Lock Co. 5 7/8"H. Made of Cast Iron. Pristine Overall Condition (Two Small cracks in left side of door). Estimate- 100.00 - 150.00

**637 Royal Safe Deposit**

American - Circa 1910's. 6" H. Made of Cast Iron. Excellent Condition. Estimate- 150.00 - 200.00



Wintertime Toys & Banks #6 February 17th, 2018 2/17/2018

Register to Bid on Liveauctioneers.com - Search for Cyber Toy Auctions!

LOT #

638 Junior Cash Register Small

J. & E. Stevens circa 1920's. Made of Cast Iron. Excellent Condition. Estimate- 100.00 - 150.00



LOT #

644 Two Safe Banks

American circa 1910 - 1930. Made of Cast Iron and Tin. Good to Fine Condition. Estimate- 80.00 - 120.00



639 Junior Cash Register Large

J. & E. Stevens circa 1920's. Made of Cast Iron. Poor Condition. Estimate- 40.00 - 60.00



645 Two White City Puzzle Banks

Nicol Co. circa 1890's. Made of Cast Iron. Poor to Good Condition. Estimate- 80.00 - 120.00



640 Three Chest Type Banks

American - Circa 1910's - 1930's. Made of Cast Iron. Good to Fine Condition. Estimate- 60.00 - 80.00



646 Three Building Banks

American circa 1900's. Made of Cast Iron. Repainted. Estimate- 80.00 - 120.00



641 Jewel Chest

American circa 1890's. Made of Cast Iron. Poor Condition (Rusty, left side of chest missing piece of iron). Estimate- 60.00 - 80.00



647 Presto Medium and Small

A. C. Williams circa 1920's. Made of Cast Iron. One Fine Condition, Gold one Repainted. Estimate- 80.00 - 120.00



642 Savings Chest

Elyen-Henstep. Detroit circa 1890's. Made of Cast Iron. Fine Condition. Estimate- 100.00 - 150.00



648 Domed Bank Smallest, 2nd Largest and Largest

A. C. Williams circa 1900's. Made of Cast Iron. Smallest Repainted, other two Domes Repainted. Estimate- 80.00 - 120.00



643 Animal Safe

American circa 1910. 3" H. Made of Cast Iron. Fine Paint Condition (Does not lock, nickel size rust spot on back panel). Estimate- 60.00 - 80.00



649 Three Skyscraper Banks

A. C. Williams circa 1910's. 4" H - 5.5" H. Made of Cast Iron. Good to Fine Condition (One with replaced twist pin). Estimate- 80.00 - 120.00



Wintertime Toys & Banks #6 February 17th, 2018 2/17/2018

Register to Bid on Liveauctioneers.com - Search for Cyber Toy Auctions!

LOT #**650 Skyscraper Tiny and Largest**

A. C. Williams circa 1910's. Made of Cast Iron. Both repainted. Estimate- 75.00 - 125.00

**LOT #****656 Two Building Banks**

American circa 1910 - 1920. Made of Cast Iron. Fine Paint Condition (Both screws replacements). Estimate- 80.00 - 120.00

**651 Two Building Banks**

American / English circa 1910's. Made of Cast Iron. Both Repainted. Estimate- 50.00 - 75.00

**657 One Story House / Two Story House**

Kenton hardware / A. C. Williams circa 1930's. Made of Cast Iron. Good to Fine Condition. Estimate- 80.00 - 120.00

**652 Two Woolworth Buildings**

Made by Kenton Hardware circa 1915. Made of Cast Iron. Very Fine Condition. Estimate- 100.00 - 150.00

**658 Victorian House Large and Small**

J. & E. Stevens circa 1890's. Made of Cast Iron. Poor to Good Condition. Estimate- 50.00 - 75.00

**653 Skyscraper**

Made by A. C. Williams circa 1910's. Made of Cast Iron. 4 3/8" H. Excellent Condition. Estimate- 80.00 - 120.00

**659 Fort Bank**

Kenton Hardware circa 1910's. Made of Cast Iron. Repainted Condition. Estimate- 100.00 - 150.00

**654 Washington Monument**

Made by A. C. Williams circa 1910's. 6 1/8" H. Made of Cast Iron. Good Condition. Estimate- 150.00 - 225.00

**660 Columbia Bank**

Kenton Hardware circa 1900's. Made of Cast Iron. 5.75" H. Repaint, but looks nice (Has its Original Trap!). Estimate- 150.00 - 200.00

**655 High Rise**

Made by Kenton Hardware circa 1910's. 4 5/8" H. Made of Cast Iron. Very Fine Condition (Needs a Clean). Estimate- 125.00 - 175.00

**661 Large Cupola**

J. & E. Stevens circa 1875. Made of Cast Iron. Repainted Condition. Estimate- 40.00 - 60.00



Wintertime Toys & Banks #6 February 17th, 2018 2/17/2018

Register to Bid on Liveauctioneers.com - Search for Cyber Toy Auctions!

LOT #

662 Two Building Banks

A. C. Williams circa 1910 / 1920. Made of Cast Iron. Good Condition. Estimate- 80.00 - 120.00



LOT #

668 Medium Cupola

J. & E. Stevens circa 1875. Made of Cast Iron. Good Condition. Estimate- 80.00 - 120.00



663 Two Car Garage

A. C. Williams circa 1920's. Made of Cast Iron. Very Fine Condition. Estimate- 80.00 - 120.00



669 Merry-Go-Round Semi Mechanical

Grey Iron Casting Co circa 1920's. Made of Cast Iron. Very Fine Condition. Estimate- 200.00 - 300.00



664 Columbia Bank

Made by Kenton Hardware circa 1900's. Made of Cast Iron. 4.5" H. Poor Condition (Replaced Twist Pin). Estimate- 75.00 - 100.00



670 Domed Mosque Medium

Grey Iron Casting Co. circa 1910's. Made of Cast Iron. Good Condition. Estimate- 80.00 - 120.00



665 Crown Bank Medium

Made by Grey Iron Casting Co. circa 1920's. Made of Cast Iron. Good Condition. Estimate- 80.00 - 120.00



671 City Bank with Teller

H. L. Judd Mfg. circa 1900. Made of Cast Iron. Fine Paint (Part of Roof Broken off and repaired.) Estimate- 60.00 - 80.00



666 Small Cupola

J. & E. Stevens circa 1875. Made of Cast Iron. Front Fine Condition, Back Poor Condition. Estimate- 50.00 - 75.00



672 Barn Bank

American - Circa 1970's. Made of Cast Iron. Good Condition. Estimate- 20.00 - 30.00



667 Old Shawneetown

Berg-bower circa 1970. 2 7/16" H. Made of Cast Iron. Pristine Condition. Estimate- 20.00 - 40.00



673 Double Door

A. C. Williams circa 1910's. Made of Cast Iron. Poor Condition. Estimate- 60.00 - 80.00



Wintertime Toys & Banks #6 February 17th, 2018 2/17/2018

Register to Bid on Liveauctioneers.com - Search for Cyber Toy Auctions!

LOT #

674 Four Tower

J. & E. Stevens circa 1900's. Made of Cast Iron. Fine Condition. Estimate- 125.00 - 175.00



675 Roof Bank

Grey Iron Casting Co. circa 1900's. Made of Cast Iron. Fine Condition. Estimate- 100.00 - 150.00



676 Tower Bank

Kyser & Rex circa 1890's. Made of Cast Iron. Very Fine Paint Condition (Door does not lock). Estimate- 300.00 - 400.00



677 State Bank

Kenton Hardware circa 1900's. 8" H. Made of Cast Iron. Very Fine Condition. Estimate- 300.00 - 400.00



678 Palace Bank

Ives, Blakeslee Co. circa 1880's. This is an impressive building bank. Made of Cast Iron. Very Fine Paint Condition (Turret Broken in 2 Pieces, Small Piece of Corner broken out of back panel). Estimate- 500.00 - 700.00



679 Small Maine Battleship

Grey Iron Casting C. circa 1900. Made of Cast Iron. Very Fine Paint Condition (Twist Pin Replaced). Estimate- 125.00 - 175.00



LOT #

680 Green Elephant with Howdah

A. C. Williams circa 1910's. Made of Cast Iron. Excellent Paint (One side covered in a black dirt?, Perhaps it rested near a fireplace?). Estimate- 50.00 - 75.00



681 Metropolitan Bank

J. & E. Stevens circa 1880's. Made of Cast Iron. Possibly Repainted. Estimate- 125.00 - 175.00



682 Safe Deposit

Shimer Toy Co. circa 1900. Made of Cast Iron Good Condition. Estimate- 40.00 - 60.00



683 Give Me a Penny

Wing Mfg. circa 1890's. Made of Cast Iron. Very Fine Paint (Replaced Twist Pin). Estimate- 100.00 - 125.00



684 Star Safe

American - Circa 1910's. Made of Cast Iron and Tin. Good Condition. Estimate- 40.00 - 60.00



685 Safe Deposit

J. & E. Stevens circa 1890's. Made of Cast Iron. Good Condition. Estimate- 40.00 - 60.00



Wintertime Toys & Banks #6 February 17th, 2018 2/17/2018

Register to Bid on Liveauctioneers.com - Search for Cyber Toy Auctions!

LOT #

686 Security Safe Deposit

Kyser & Rex circa 1880's. Made of Cast Iron. 3 7/8" H. Fine Condition. Estimate- 50.00 - 75.00



687 National Bank

American circa 1900's. Made of Cast Iron. 4 5/8" H. Poor Condition. Estimate- 40.00 - 60.00



688 Tin House

German circa 1930. Made of Tin. Fine Condition. Estimate- 30.00 - 50.00



689 Cupid Safe

Kenton Hardware circa 1910's. Made of Cast Iron. 4 5/8" H. Very Fine Condition. Estimate- 80.00 - 120.00



690 Ornate Wooden Bank

European circa 1930's. 8" x 5.25" W. Made of Wood. Pristine Condition. Estimate- 40.00 - 60.00

